

# UNIVERSITY OF ABERDEEN

## NOTICE TO MARINERS

No. UoA/18/2019

### MORAY FIRTH, SCOTLAND

Date of notice: 17<sup>th</sup> December, 2019

Mariners are advised that, further to notice UoA/17/2019 and preceding notices, the University of Aberdeen has **removed** moorings and equipment at the locations listed in table 1. Mariners should note that equipment **service** operations at locations listed in table 2 are now complete.

Table 1. Completed mooring **removal** works. Some locations have been previously recorded in notices to mariners, but are included here to provide a full list of locations where equipment has been removed.

Name	Coordinates (WGS84 datum, as laid)		Status
47	58°00.660' N	003°08.949' W	Removed
48	58°04.022' N	003°07.497' W	Removed
52	58°11.096' N	002°51.300' W	Removed
54	58°13.516' N	002°41.972' W	Removed
64	57°42.530' N	003°30.181' W	Removed
65	57°43.484' N	003°25.177' W	Removed
66	57°43.077' N	003°14.978' W	Removed
67	57°42.070' N	003°10.026' W	Removed
111	58°09.014' N	002°37.203' W	Removed
146	58°15.229' N	002°53.324' W	Removed
150	58°16.657' N	002°51.081' W	Removed
159	58°09.357' N	002°52.500' W	Removed
163	58°17.961' N	002°44.988' W	Removed
184	58°15.441' N	002°47.647' W	Removed
216	58°13.863' N	002°36.247' W	Removed
217	58°13.799' N	002°39.306' W	Removed
218	58°14.756' N	002°40.264' W	Removed
219	58°12.239' N	002°40.021' W	Removed
220	58°12.118' N	002°41.762' W	Removed
221	58°15.418' N	002°41.821' W	Removed
222	58°15.837' N	002°44.220' W	Removed
223	57°41.943' N	003°05.284' W	Removed
224	57°43.023' N	003°09.184' W	Removed
225	57°43.564' N	003°14.463' W	Removed
227	57°44.039' N	003°25.194' W	Removed
233	58°14.761' N	002°43.616' W	Removed
234	58°14.041' N	002°46.020' W	Removed
238	58°13.917' N	002°48.053' W	Removed
240	58°06.539' N	002°49.668' W	Removed
241	58°09.118' N	002°40.321' W	Removed

Table 1 (continued).

Name	Coordinates (WGS84 datum, as laid)		Status
242	58° 10.859' N	002° 35.460' W	Removed
243	58° 08.880' N	002° 43.204' W	Removed
260	58° 07.225' N	002° 42.861' W	Removed
261	58° 07.744' N	002° 43.113' W	Removed
262	58° 08.272' N	002° 43.251' W	Removed
263	58° 08.803' N	002° 43.468' W	Removed
264	58° 09.341' N	002° 43.689' W	Removed
265	58° 09.869' N	002° 43.863' W	Removed
266	58° 10.393' N	002° 44.039' W	Removed

Table 2. Completed mooring service works. **These moorings remain in situ.**

Name	Coordinates (WGS84 datum)		Characteristics
1	57° 41.411' N	003° 58.930' W	Surface marked (NB40 buoy)
2	57° 35.118' N	004° 05.875' W	Surface marked (NB40 buoy)
3	57° 44.073' N	003° 19.798' W	Surface marked (dhan and RADAR reflector)
4	57° 41.376' N	003° 05.587' W	Surface marked (dhan and RADAR reflector)
17	57° 57.769' N	003° 31.237' W	Subsurface with acoustic release
42	57° 52.348' N	003° 29.035' W	Subsurface with acoustic release
45	57° 57.267' N	003° 16.081' W	Subsurface with acoustic release
55	58° 16.008' N	002° 39.951' W	Subsurface
89	57° 56.058' N	003° 38.222' W	Subsurface with acoustic release
110	58° 07.659' N	002° 45.365' W	Subsurface
112	58° 10.795' N	002° 40.530' W	Subsurface. Two moorings at this location.
160	58° 17.672' N	002° 49.913' W	Subsurface with transponder
161	58° 13.004' N	002° 55.992' W	Subsurface with transponder
162	58° 18.188' N	002° 54.064' W	Subsurface with transponder
164	58° 12.910' N	002° 51.842' W	Subsurface with transponder
164(A)	58° 12.908' N	002° 51.842' W	Subsurface with transponder
239	58° 12.243' N	002° 49.848' W	Subsurface

Table 3. The following moorings have not been found and are considered **lost.**

Name	Coordinates (WGS84 datum, as laid)		Characteristics
226	57° 45.122' N	003° 20.105' W	Subsurface with acoustic release
228	57° 43.620' N	003° 30.176' W	Surface marked (dhan and RADAR reflector)

The above moorings support sound recording equipment, and / or acoustic loggers that record echolocation clicks of dolphins and porpoises (see images of devices at the foot of this notice). Moorings extend no more than 3m vertically from the seabed.

A further Notice to Mariners will be issued in the event of additional operations on the above listed locations.

For information and enquiries please contact:

Tim Candido Barton,

Lighthouse Field Station, University of Aberdeen, George St., Cromarty, Ross-shire, IV11 8YL.

+44 (0)1381 600548.

[t.r.barton@abdn.ac.uk](mailto:t.r.barton@abdn.ac.uk)



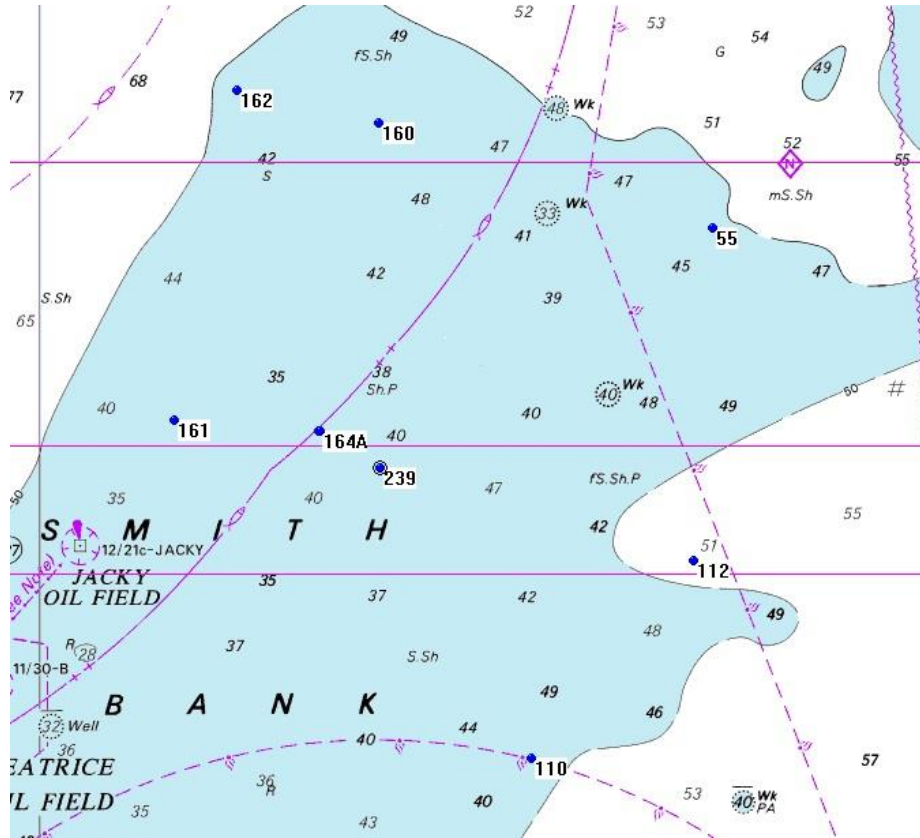
Acoustic logger  
(600 x 95mm)



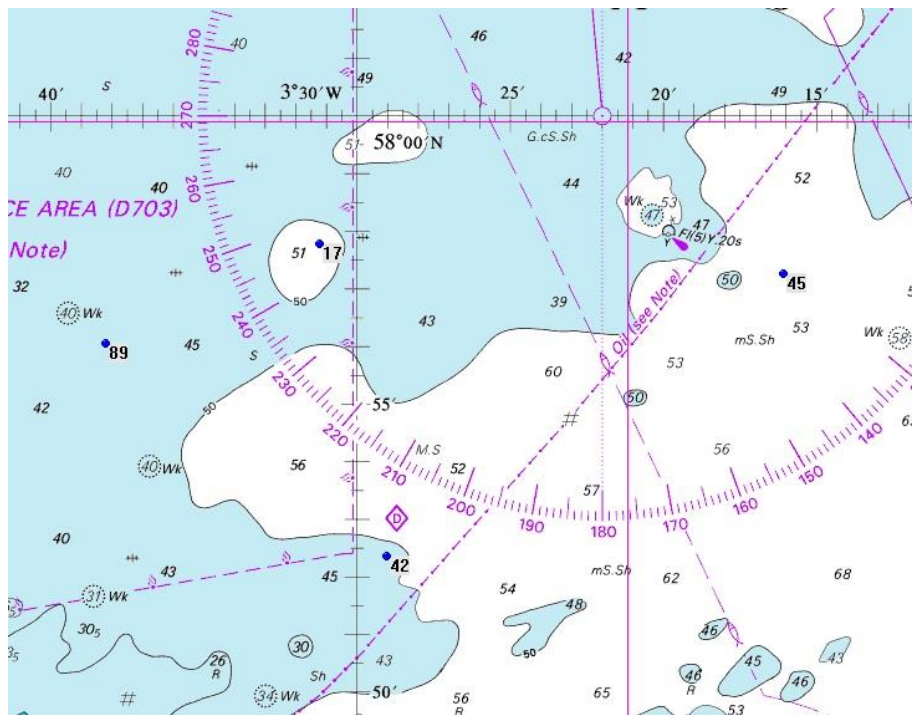
Sound recorder  
(200 x 60mm)

Examples of equipment which the above moorings support.



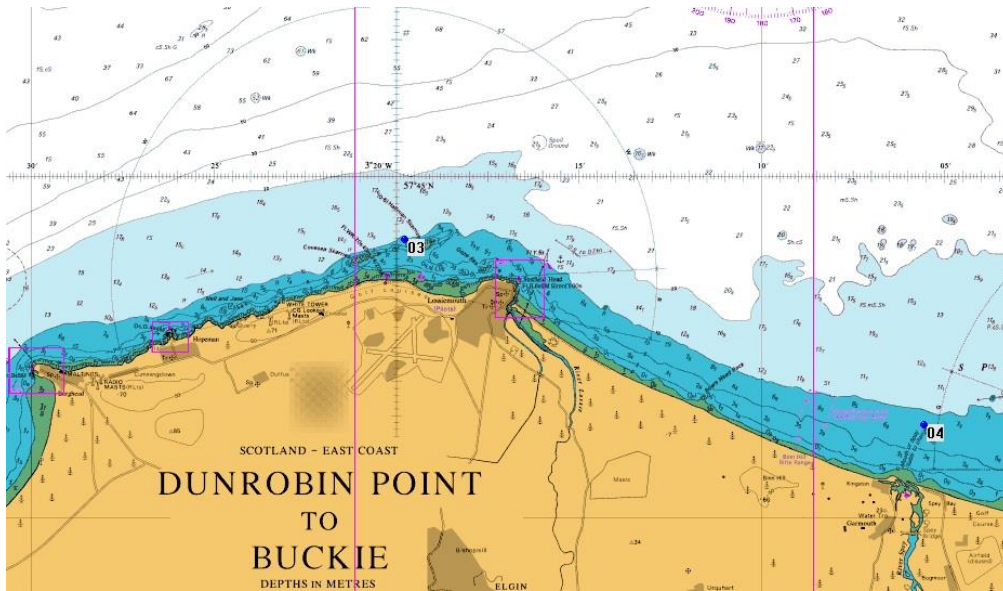


Extract 3. Smith Bank – locations at which moorings have been **serviced and redeployed** (see table 2).

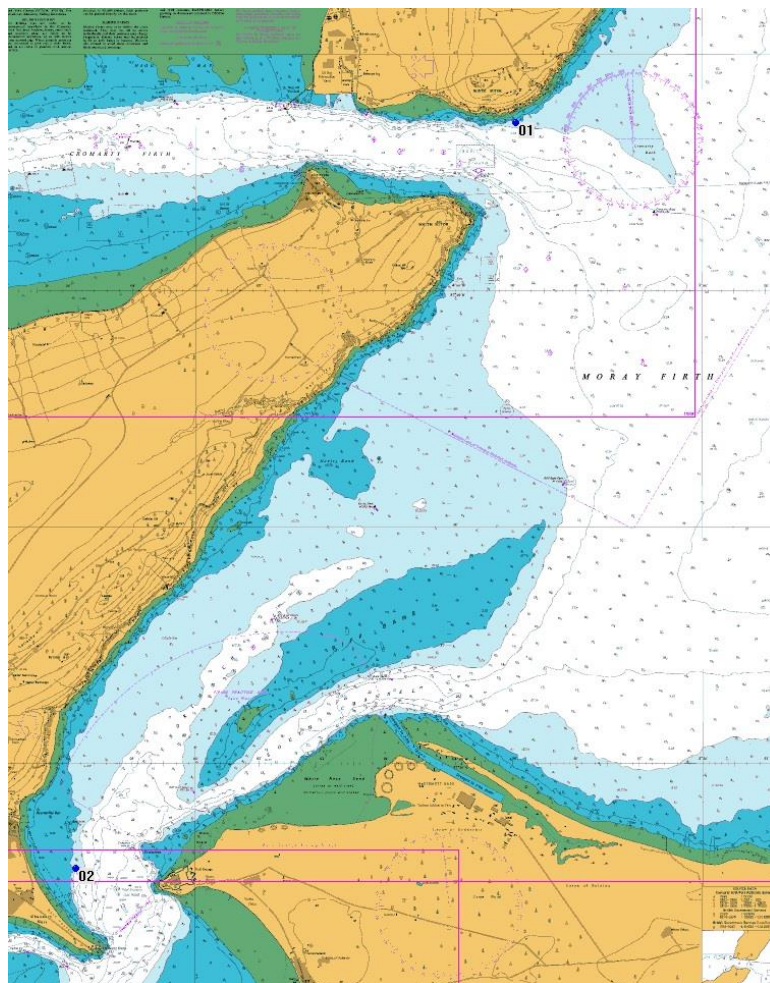


Extract 4. Smith Bank to Tarbatness – locations at which moorings have been **serviced and redeployed** (see table 2).

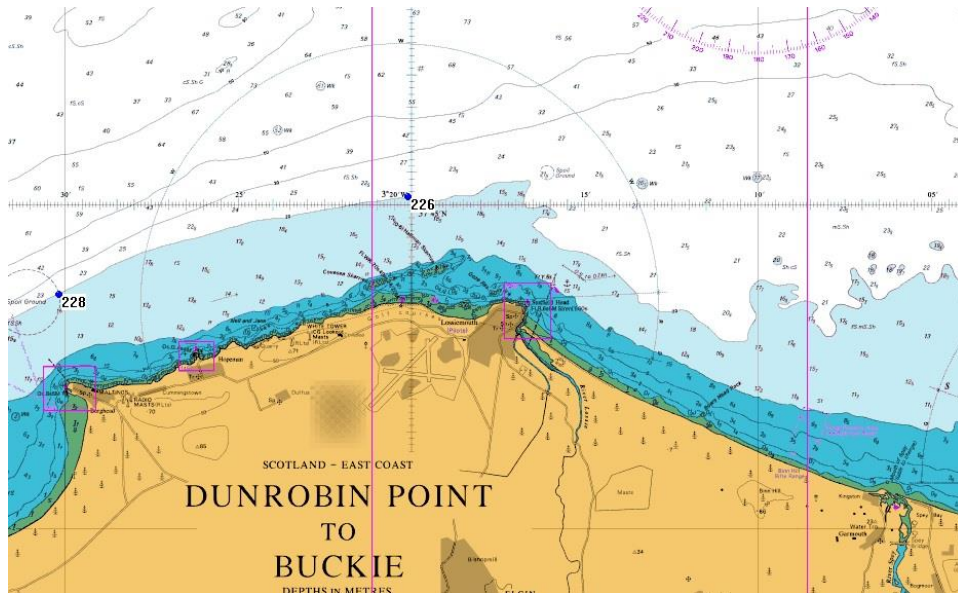




Extract 5. Burghead to Buckie – locations at which moorings have been **serviced and redeployed** (see table 2).



Extract 6. Inner Moray Firth – locations at which moorings have been **serviced and redeployed** (see table 2).



Extract 7. Burghead to Buckie – locations at which moorings are **believed lost** (see table 3).