

UNIVERSITY OF ABERDEEN

NOTICE TO MARINERS

No. UoA/17/2019

MORAY FIRTH, SCOTLAND

Date of notice: 24th September, 2019

Mariners are advised that, further to notices UoA/06/2019, UoA/08/2019 & UoA/14/2019, the University of Aberdeen intends to **remove** moorings and equipment at the locations listed in table 1. Mariners should note that equipment at locations listed in table 2 has already been recovered.

Table 1. Mooring / equipment locations.

Name	Coordinates (WGS84 datum, as laid)		Characteristics
47	58° 00.660' N	003° 08.949' W	Subsurface
48	58° 04.022' N	003° 07.497' W	Subsurface
52	58° 11.096' N	002° 51.300' W	Subsurface
54	58° 13.516' N	002° 41.972' W	Subsurface
111	58° 09.014' N	002° 37.203' W	Subsurface
112	58° 10.788' N	002° 40.534' W	Subsurface (SM2M sound recorder)
146	58° 15.229' N	002° 53.324' W	Subsurface
150	58° 16.657' N	002° 51.081' W	Subsurface
159	58° 09.357' N	002° 52.500' W	Subsurface
163	58° 17.961' N	002° 44.988' W	Subsurface
164(A)	58° 12.833' N	002° 51.686' W	Subsurface (SM2M sound recorder)
184	58° 15.441' N	002° 47.647' W	Subsurface
216	58° 13.863' N	002° 36.247' W	Subsurface
217	58° 13.799' N	002° 39.306' W	Subsurface
218	58° 14.756' N	002° 40.264' W	Subsurface
219	58° 12.239' N	002° 40.021' W	Subsurface
220	58° 12.118' N	002° 41.762' W	Subsurface
221	58° 15.418' N	002° 41.821' W	Subsurface
222	58° 15.837' N	002° 44.220' W	Subsurface
233	58° 14.761' N	002° 43.616' W	Subsurface
234	58° 14.041' N	002° 46.020' W	Subsurface
238	58° 13.917' N	002° 48.053' W	Subsurface
240	58° 06.539' N	002° 49.668' W	Subsurface
241	58° 09.118' N	002° 40.321' W	Subsurface
242	58° 10.859' N	002° 35.460' W	Subsurface
243	58° 08.880' N	002° 43.204' W	Subsurface
264	58° 09.341' N	002° 43.689' W	Lander frame (subsurface)
265	58° 09.869' N	002° 43.863' W	Lander frame (subsurface)
266	58° 10.393' N	002° 44.039' W	Lander frame (subsurface)

Table 2. Equipment previously recovered.

Name	Coordinates, as laid (WGS84 datum)		Characteristics
260	58° 07.225' N	002° 42.861' W	Lander frame (subsurface)
261	58° 07.744' N	002° 43.113' W	Lander frame (subsurface)
262	58° 08.272' N	002° 43.251' W	Lander frame (subsurface)
263	58° 08.803' N	002° 43.468' W	Lander frame (subsurface)

The above moorings support sound recording equipment, and / or acoustic loggers that record echolocation clicks of dolphins and porpoises (see images of devices at the foot of this notice). Moorings extend no more than 3m vertically from the seabed.

All works will be carried out by Moray First Marine Ltd., using MV “Waterfall”.

These works will commence as soon as possible after the date of this notice, subject to weather.

Waterfall	
General Description and Dimensions:	Workboat, UK MCA Cat.2, 60nm from safe haven LOA 16m, Beam 6m.
Call sign:	2CBT4
MMSI:	235071392
On Board Contact:	Bill Ruck, 07775 802963
E-mail:	bill@moraymarine.com
	

A further Notice to Mariners will be issued in the event of additional operations on the above listed locations.

For information and enquiries please contact:

Tim Candido Barton,

Lighthouse Field Station, University of Aberdeen, George St., Cromarty, Ross-shire, IV11 8YL.

+44 (0)1381 600548.

t.r.barton@abdn.ac.uk



Acoustic logger
(600 x 95mm)

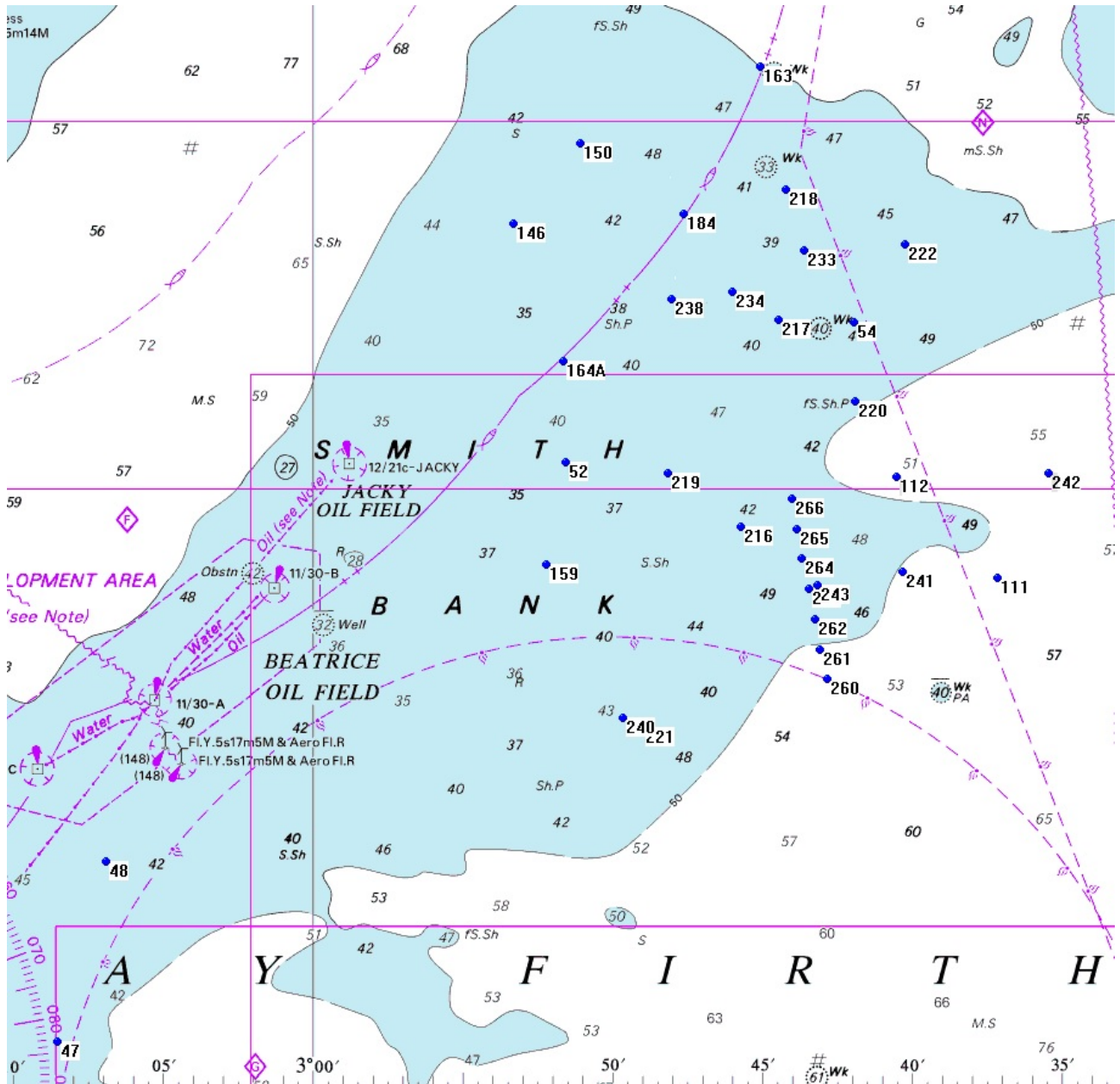


Lander
(700 x 500mm)



SM2M sound recorder
(900 x 170mm)

Examples of equipment which the above moorings support.



Extract 1. Mooring locations noted in this Notice to Mariners.