

UNIVERSITY OF ABERDEEN

NOTICE TO MARINERS

No. UoA/12/2019

MORAY FIRTH, SCOTLAND

Date of notice: 24th July, 2019

Mariners are advised that, further to notice UoA/11/2019, the University of Aberdeen has **removed** moorings and equipment at the locations listed in table 1.

Table 1. Equipment recovery locations.

Name	Coordinates (WGS84 datum)		Characteristics
247	58° 14.078' N	002° 45.922' W	Subsurface rope mooring
248	58° 14.092' N	002° 45.895' W	Subsurface rope mooring
249	58° 14.113' N	002° 45.846' W	Subsurface rope mooring
250	58° 19.027' N	002° 44.075' W	Lander frame (subsurface)
251	58° 18.996' N	002° 44.036' W	Lander frame (subsurface)
252	58° 18.971' N	002° 43.990' W	Lander frame (subsurface)
253	58° 18.965' N	002° 44.034' W	Lander frame (subsurface)
254	58° 18.993' N	002° 44.083' W	Lander frame (subsurface)
255	58° 18.996' N	002° 44.136' W	Lander frame (subsurface)
256	58° 18.965' N	002° 44.087' W	Lander frame (subsurface)
257	58° 18.939' N	002° 44.032' W	Lander frame (subsurface)
258	58° 18.982' N	002° 44.060' W	Subsurface rope mooring

A further Notice to Mariners will be issued in the event of additional operations at the above locations.

For information and enquiries please contact:

Tim Candido Barton,

Lighthouse Field Station, University of Aberdeen, George St., Cromarty, Ross-shire, IV11 8YL.

+44 (0)1381 600548.

t.r.barton@abdn.ac.uk



Acoustic logger
(600 x 95mm)

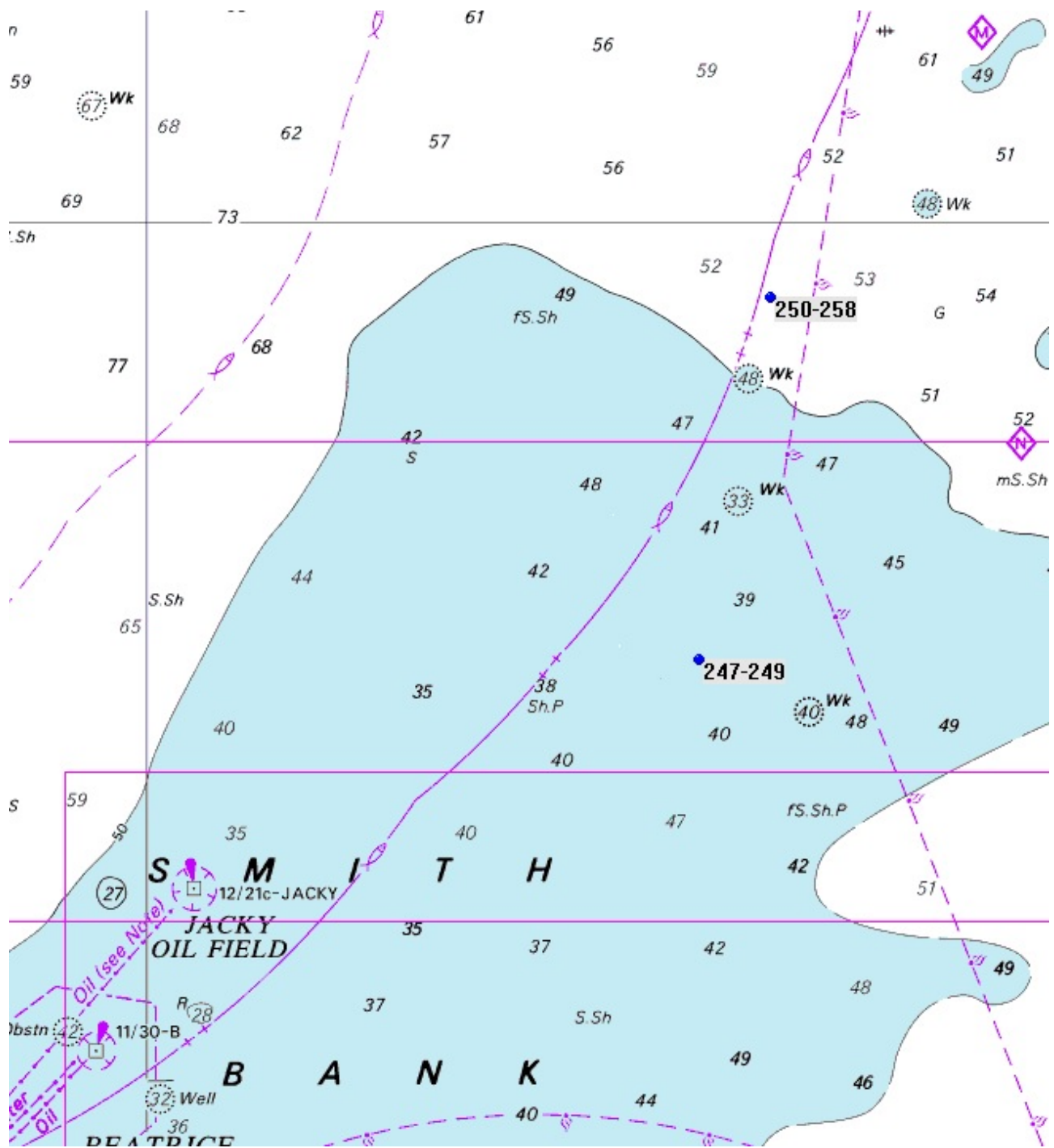


Lander
(700 x 500mm)



Sound recorder
(200 x 60mm)

Examples of equipment which the above moorings support.



Mooring locations noted in this Notice to Mariners – Smith Bank detail.