

UNIVERSITY OF ABERDEEN

NOTICE TO MARINERS

No. UoA/11/2019

MORAY FIRTH, SCOTLAND

Date of notice: 18th July, 2019

Mariners are advised that, further to notice UoA/10/2019, the University of Aberdeen intends to **remove** moorings and equipment at the locations listed in table 1 and **may remove** moorings and equipment at the locations in table 2. Mariners are also advised that the mooring listed in table 3 has been previously **removed**.

Table 1. Equipment recovery locations.

Name	Coordinates (WGS84 datum)		Characteristics
250	58° 19.027' N	002° 44.075' W	Lander frame (subsurface)
251	58° 18.996' N	002° 44.036' W	Lander frame (subsurface)
252	58° 18.971' N	002° 43.990' W	Lander frame (subsurface)
253	58° 18.965' N	002° 44.034' W	Lander frame (subsurface)
254	58° 18.993' N	002° 44.083' W	Lander frame (subsurface)
255	58° 18.996' N	002° 44.136' W	Lander frame (subsurface)
256	58° 18.965' N	002° 44.087' W	Lander frame (subsurface)
257	58° 18.939' N	002° 44.032' W	Lander frame (subsurface)
258	58° 18.982' N	002° 44.060' W	Subsurface rope mooring

Table 2. Equipment recovery locations. These may be recovered at this time, subject to the completion of other works, or may be left in situ until a later date.

Name	Coordinates (WGS84 datum)		Characteristics
247	58° 14.078' N	002° 45.922' W	Subsurface rope mooring
248	58° 14.092' N	002° 45.895' W	Subsurface rope mooring
249	58° 14.113' N	002° 45.846' W	Subsurface rope mooring


Table 3. Previously removed equipment mooring.

Name	Coordinates (WGS84 datum)		Characteristics
259	58° 19.075' N	002° 44.216' W	Surface marked with round red float.

All works will be carried out by Moray First Marine Ltd., using MV “Waterfall” or MV “Coral Wind”.

These works will commence 22nd July, subject to weather.

Waterfall	
General Description and Dimensions:	Workboat, UK MCA Cat.2, 60nm from safe haven LOA 16m, Beam 6m.
Call sign:	2CBT4
MMSI:	235071392
On Board Contact:	Bill Ruck, 07775 802963
E-mail:	bill@moraymarine.com
	

Coral Wind	
General Description and Dimensions:	Workboat, UK MCA Cat.2, 60nm from safe haven LOA 14m, Beam 5.1m, Draft 1.2m
Call sign:	2EMX8
MMSI:	235086491
On Board Contact:	Bill Ruck, 07775 802963
E-mail:	bill@moraymarine.com
	

A further Notice to Mariners will be issued in the event of additional operations at the above listed locations.

For information and enquiries please contact:
Tim Candido Barton,

Lighthouse Field Station, University of Aberdeen, George St., Cromarty, Ross-shire, IV11 8YL.
+44 (0)1381 600548.
t.r.barton@abdn.ac.uk



Acoustic logger
(600 x 95mm)

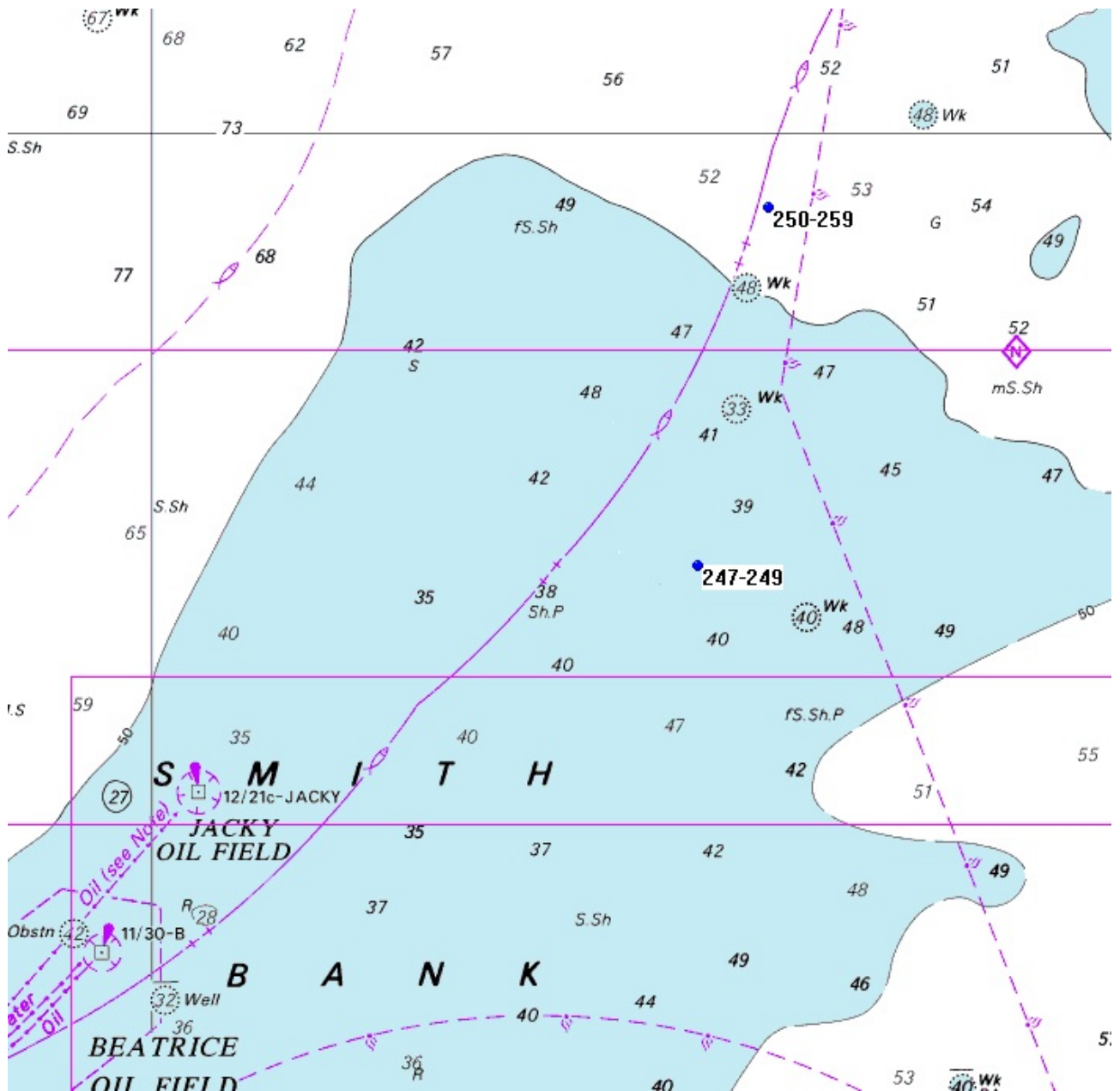


Lander
(700 x 500mm)



Sound recorder
(200 x 60mm)

Examples of equipment which the above moorings support.



Mooring locations noted in this Notice to Mariners – Smith Bank detail.