

UNIVERSITY OF ABERDEEN

NOTICE TO MARINERS

No. UoA/09/2019

MORAY FIRTH, SCOTLAND

Date of notice: 5th July, 2019

Mariners are advised that the University of Aberdeen intends to undertake the operations listed in the tables below.

Table 1. Proposed long-term equipment deployments.

Name	Coordinates (WGS84 datum)		Characteristics
247	58° 14.080' N	002° 45.948' W	Subsurface rope mooring
248	58° 14.099' N	002° 45.912' W	Subsurface rope mooring
249	58° 14.118' N	002° 45.875' W	Subsurface rope mooring

These moorings will remain in place until approximately September, 2019.

Table 2. Proposed short-term equipment deployments.

Name	Coordinates (WGS84 datum)		Characteristics
250	58° 19.020' N	002° 44.079' W	Lander frame (subsurface)
251	58° 18.991' N	002° 44.032' W	Lander frame (subsurface)
252	58° 18.962' N	002° 43.985' W	Lander frame (subsurface)
253	58° 18.964' N	002° 44.036' W	Lander frame (subsurface)
254	58° 18.993' N	002° 44.083' W	Lander frame (subsurface)
255	58° 18.995' N	002° 44.134' W	Lander frame (subsurface)
256	58° 18.966' N	002° 44.087' W	Lander frame (subsurface)
257	58° 18.937' N	002° 44.040' W	Lander frame (subsurface)
258	58° 18.978' N	002° 44.059' W	Subsurface rope mooring

These moorings will remain in place for approximately two weeks following deployment, subject to weather.

Table 3. Proposed short-term equipment deployment.

Name	Coordinates (WGS84 datum)		Characteristics
259	58° 19.075' N	002° 44.216' W	Surface marked with round red float.

This mooring will remain in place for no more than 24 hours following deployment, subject to weather.

The above moorings support sound recording equipment, and / or acoustic loggers that record echolocation clicks of dolphins and porpoises (see images of devices at the foot of this notice). Moorings extend no more than 3m vertically from the seabed.

In conjunction with the equipment deployments noted above, the University of Aberdeen intends to undertake survey transects using vessel mounted ADCP and other acoustic devices along the transect lines noted in table 4, below.

Table 4. Transect end positions.

Name	Start (WGS84 datum)		End (WGS84 datum)	
T1	58° 19.268' N	002° 44.504' W	58° 18.694' N	002° 43.576' W
T2	58° 18.682' N	002° 43.604' W	58° 19.256' N	002° 44.531' W
T3	58° 18.883' N	002° 44.628' W	58° 19.258' N	002° 43.791' W
T4	58° 19.173' N	002° 43.654' W	58° 18.798' N	002° 44.490' W
T5	58° 18.784' N	002° 44.467' W	58° 19.158' N	002° 43.630' W
ADCP	58° 18.749' N	002° 43.682' W	58° 19.077' N	002° 44.216' W

All works will be carried out by Moray First Marine Ltd., using MV “Waterfall” or MV “Coral Wind”.

These works will commence as soon as possible after the date of this notice, subject to weather.

Waterfall	
General Description and Dimensions:	Workboat, UK MCA Cat.2, 60nm from safe haven LOA 16m, Beam 6m.
Call sign:	2CBT4
MMSI:	235071392
On Board Contact:	Bill Ruck, 07775 802963
E-mail:	bill@moraymarine.com
	

Coral Wind	
General Description and Dimensions:	Workboat, UK MCA Cat.2, 60nm from safe haven LOA 14m, Beam 5.1m, Draft 1.2m
Call sign:	2EMX8
MMSI:	235086491
On Board Contact:	Bill Ruck, 07775 802963
E-mail:	bill@moraymarine.com
	

A further Notice to Mariners will be issued in the event of additional operations on the above listed locations.

For information and enquiries please contact:

Tim Candido Barton,

Lighthouse Field Station, University of Aberdeen, George St., Cromarty, Ross-shire, IV11 8YL.

+44 (0)1381 600548.

t.r.barton@abdn.ac.uk

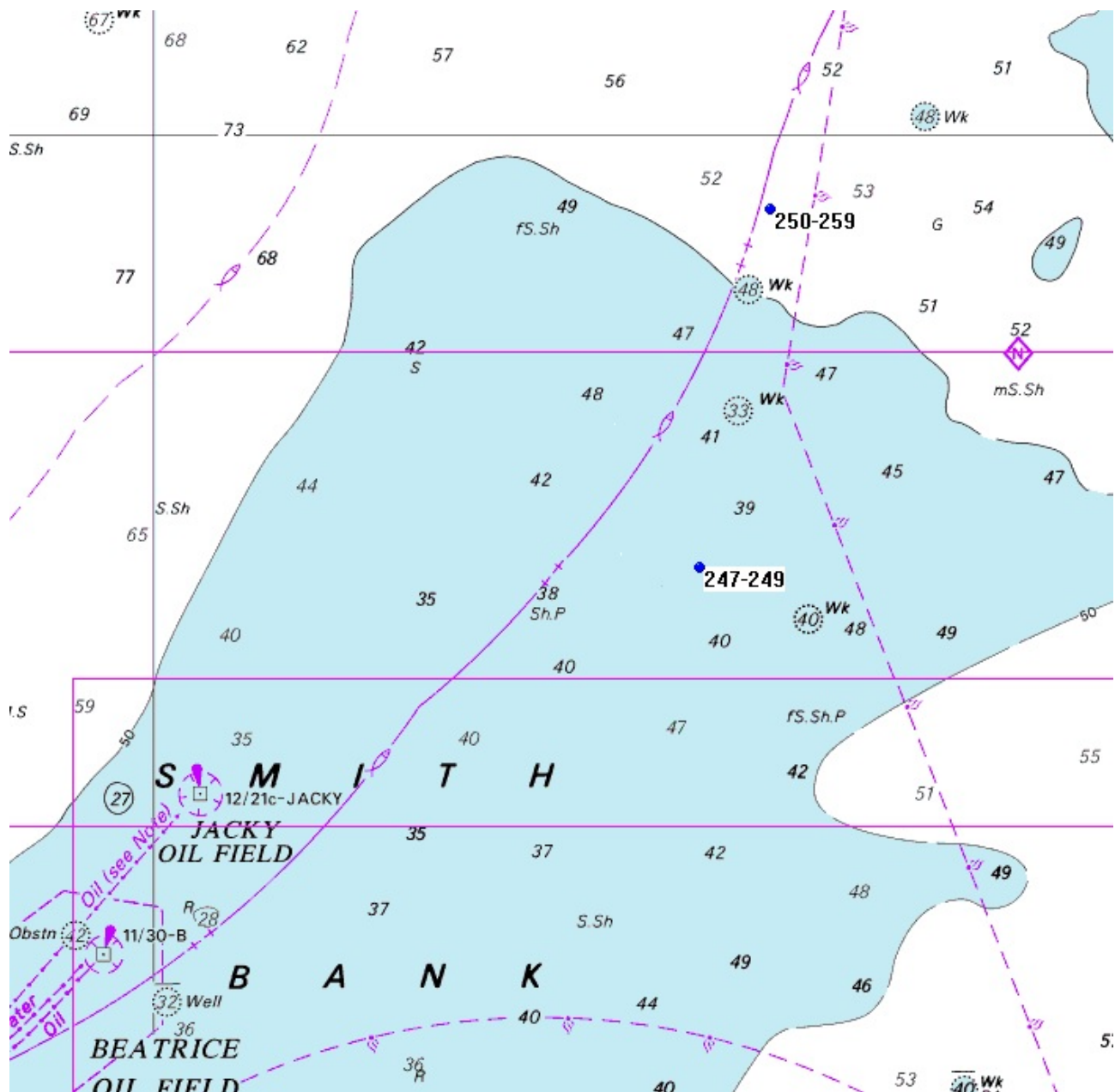


Acoustic logger
(600 x 95mm)

Lander
(700 x 500mm)

Sound recorder
(200 x 60mm)

Examples of equipment which the above moorings support.



Mooring locations noted in this Notice to Mariners – Smith Bank detail.

Transects noted in table 4 (above) will be centred approximately on locations 250-259 and will extend no further than 0.5nm from those locations.