

UNIVERSITY OF ABERDEEN

NOTICE TO MARINERS

No. UoA/04/2018

CROMARTY FIRTH, INVERNESS FIRTH, BEAULY FIRTH. SCOTLAND

Date of notice: 9th May, 2018

Mariners are advised that the University of Aberdeen has **installed** scientific equipment moorings at the locations listed in table 1 (see also chart extracts at the foot of this notice):

Table 1.

Name	Coordinates (WGS84 datum)		Characteristics
117	57° 41.155' N	003° 59.883' W	Subsurface.
125	57° 40.866' N	003° 59.667' W	Subsurface.
126	57° 40.925' N	004° 00.391' W	Subsurface.
136	57° 35.479' N	004° 04.264' W	Subsurface.
141	57° 41.430' N	004° 00.146' W	Subsurface.
204	57° 34.551' N	004° 04.905' W	Subsurface.
206	57° 34.081' N	004° 03.672' W	Subsurface.
207	57° 33.903' N	004° 05.034' W	Subsurface.
210	57° 30.657' N	004° 13.030' W	Subsurface.
211	57° 30.339' N	004° 12.102' W	Subsurface.
212	57° 30.125' N	004° 13.389' W	Subsurface.
213	57° 29.873' N	004° 14.884' W	Subsurface.
214	57° 29.816' N	004° 16.191' W	Subsurface.
215	57° 41.078' N	003° 59.172' W	Subsurface.

Mariners are further advised that the University of Aberdeen has **serviced** the moorings listed in table 2 and **reinstalled them in their existing locations** (see also chart extracts at the foot of this notice):

Table 2.

Name	Coordinates (WGS84 datum)		Characteristics
1	57° 41.421' N	003° 58.951' W	Surface marked (NB50 buoy, red)
2	57° 35.118' N	004° 05.875' W	Surface marked (NB50 buoy, red)

The moorings support sound recording equipment, and acoustic loggers that record echolocation clicks of dolphins and porpoises (see images of devices at the foot of this notice). Subsurface moorings extend no more than two metres vertically from the seabed.

A further Notice to Mariners will be issued in the event of additional operations on the above listed mooring locations.

For information and enquiries please contact:

Tim Candido Barton,

Lighthouse Field Station, University of Aberdeen, George St., Cromarty, Ross-shire, IV11 8YL.

+44 (0)1381 600548.

t.r.barton@abdn.ac.uk

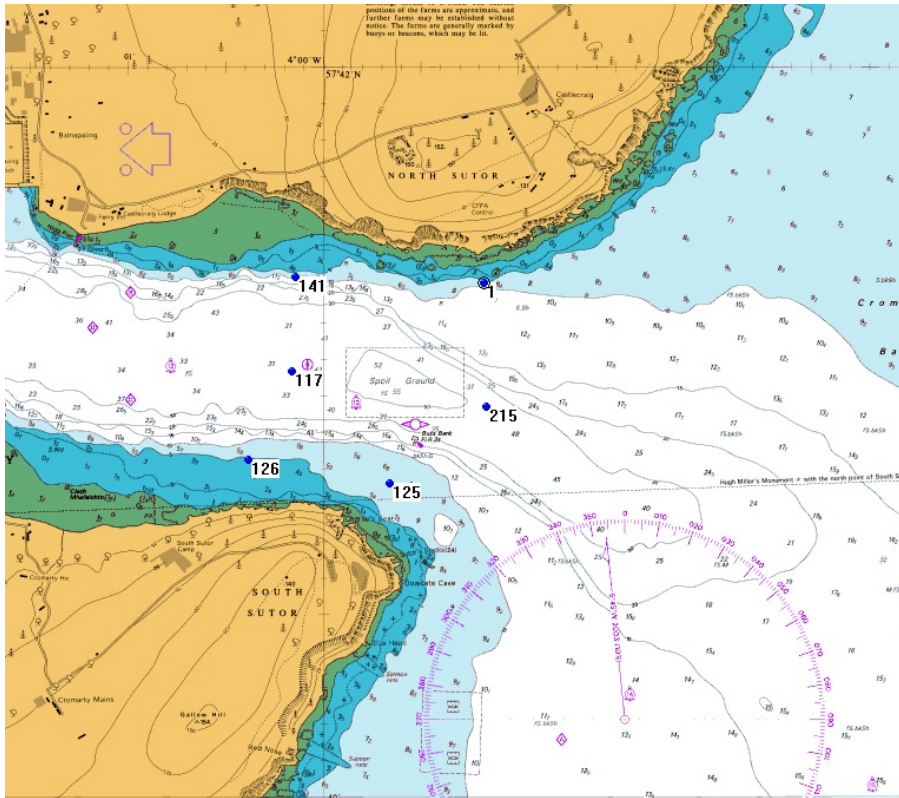


Acoustic logger
(600 x 95mm)

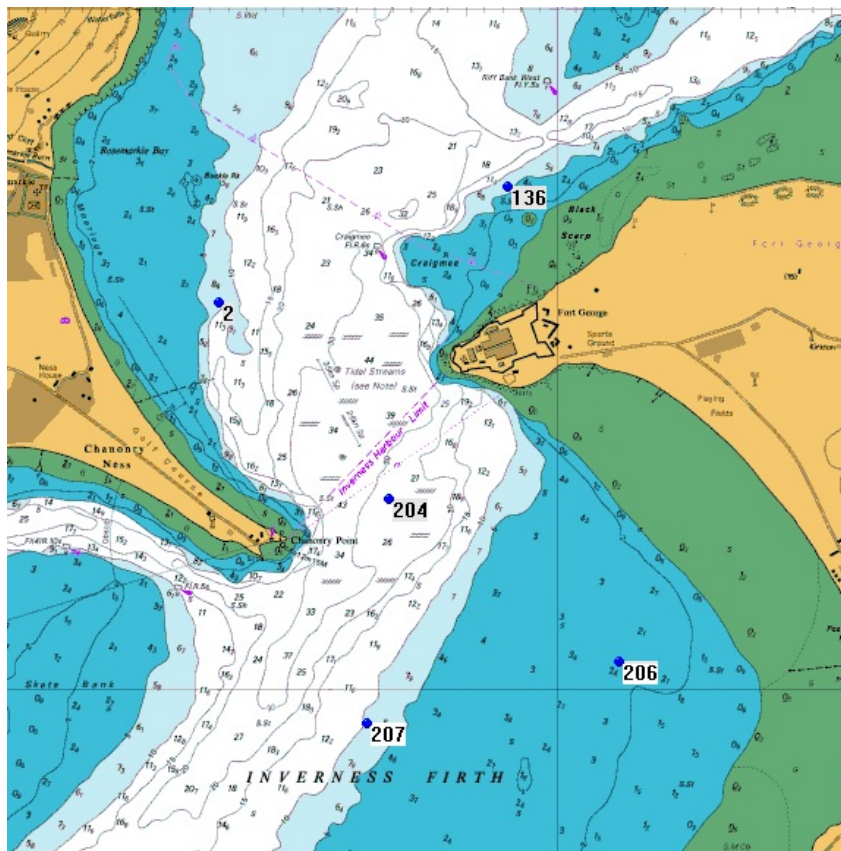


Sound recorder
(200 x 60mm)

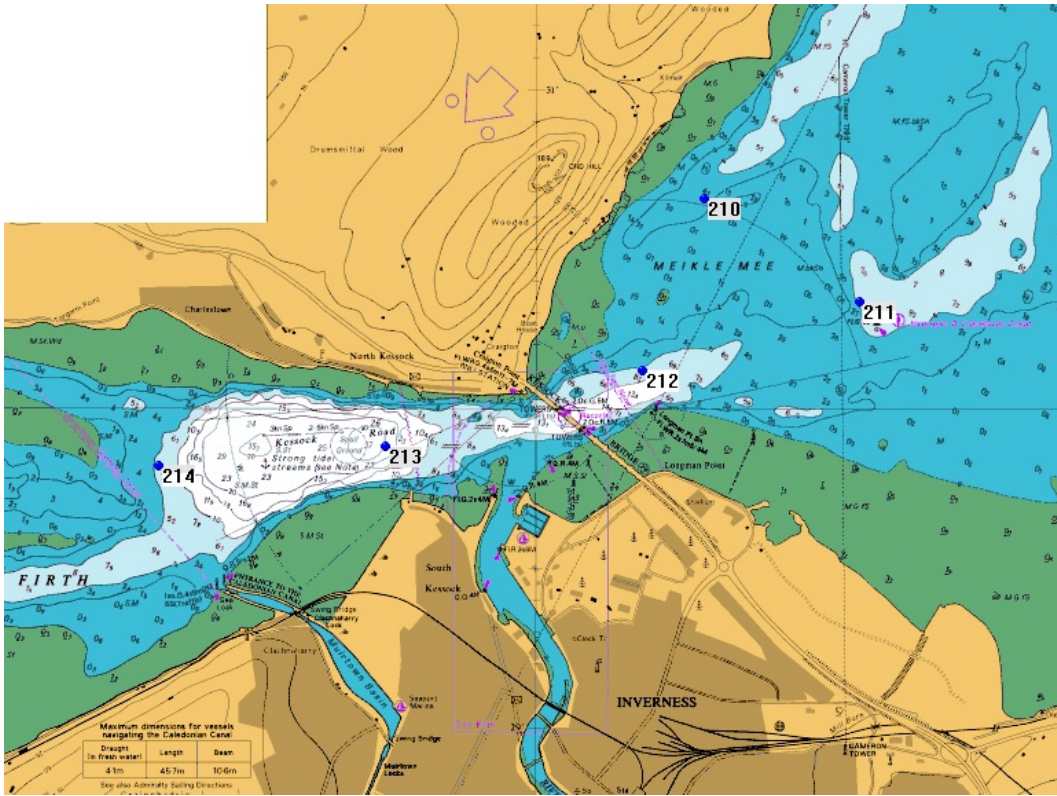
Examples of equipment which the above moorings support.



Mooring locations noted in this Notice to Mariners – Entrance to the Cromarty Firth.



Mooring locations noted in this Notice to Mariners – Inverness Firth / Chanonyr narrows.



Mooring locations noted in this Notice to Mariners – Inverness & Beaulieu Firth.