

Sample Race Courses Index (Beta Version*)

Part1 (Handicap Races): When you plan a course, please consider **wind strength** and **boat speed of the slowest handicap boat** which is possible for them to complete a race within the time limit.

Index No.	Wind		Junior or Novice Sailors	Tide		Mark A position	Racing Marks	
	Directions	Strength		IN	OUT			
		10+mph						Light
1	S - SE	o	Δ	Δ			A1	Ds Gp Ep Ks A1s
2	S - SE	o	o	o			A	Cs Gs As
3	S - SE	o	o	o			A	Gp Cp Ap
4	SE - E	e	Δ	Δ	-	-	A	Cs Es Gs Cp As
5	SE - E	e	Δ	Δ	-	-	A	Cs Gp Ep Cp Ap
6	SE - E	o	Δ	Δ			A	Cs Es Gs Ap
7	SE - E	o	Δ	Δ			A	Gp Ep Cp Ap
8	SE - E	o	Δ	Δ			A	Cs Es Gs Ap
9	SE - E	o	Δ	Δ			A	Gp Ep Cp Ap
10	E	o	o	o			A	Kp Hp Jp Ap
11	E	Δ	o	o			A2	Js Hs Ks A2s
12	E	Δ	o	o			A1	Js Ks A1s
13	E	Δ	o	o			A	Kp Bp Ap
14	E	Δ	o	o			A	Kp Cp Ap
15	S	Δ	o	o			A	Kp Hp Jp Ap
16	S	Δ	o	o			A2	Js Hs Ks A2s
17	S	Δ	o	o			A1	Js Ks A1s
18	S	o	Δ	Δ			A2	Ep Dp Cp Ap
19	S	o	Δ	Δ			A2	Ep Dp Bp A2p
20	SW	o	o	o			A2	Fp Js Dp Cp A2p
21	SW	Δ	o	o			A2	Hp Jp Bp A2p
22	SW	o	Δ	Δ			A2	Fp Cp A2p
23	SW	Δ	o	o			A	Bs Hs As
24	SW	o	Δ	Δ			A	Cs Fs As
25	SW	o	Δ	Δ			A2	Fp Bp A2p
26	SW	o	Δ	Δ			A	Bs Fs As
27	W	o	Δ	X			A	Gp Fp Dp Cp Ap
28	W	o	Δ	X			A	Cs Ds Fs Gs As
29	W	o	Δ	Δ			A	Cs Ds Gs As
30	W	Δ	o	o			A	Kp Bp Ap
31	W	Δ	o	o			A2	Kp Jp A2p
32	N - NW	Δ	o	o			A2	Js Hs Ks A2s
33	N - NW	o	Δ	Δ			A	Ds Es Ks As
34	N - NW	o	Δ	Δ			A	Kp Ep Dp Ap
35	N - NW	o	Δ	X			A	Ds Es Fs Ks As
36	N - NW	o	Δ	X			A	Kp Fp Ep Dp Ap

* If you find a error(s) in this document, please inform the Sailing Subcommittee (sailing@chanonry.org.uk).
Thank you for your cooperation.

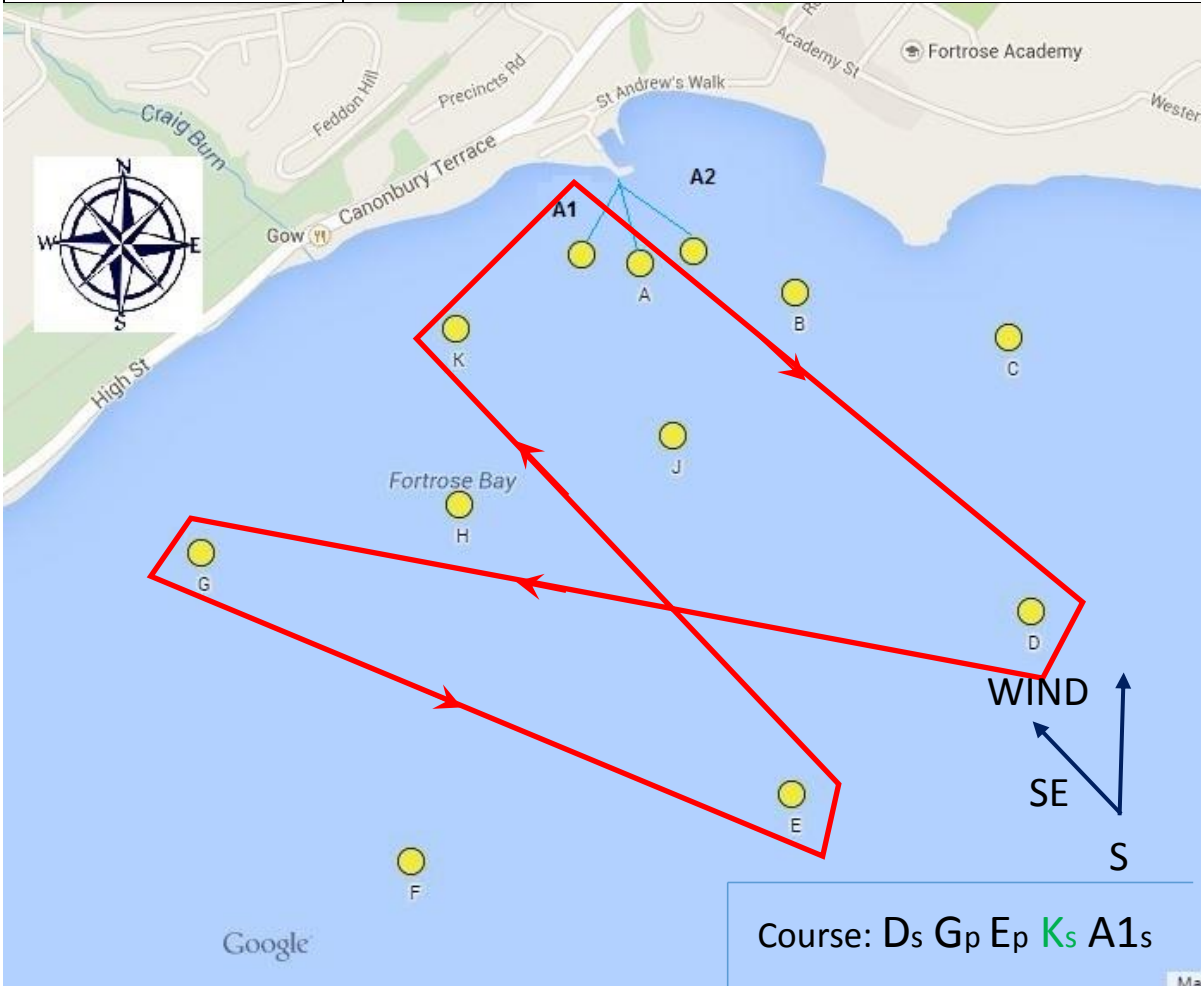
Part2 (Asymmetrics)
Under Construction by Musto Skiff Sailors

Index No.	Wind			Tide		Racing Marks
	Directions	Strength		IN	OUT	
		10+mph	Light			
1						

Part1 (Handicap Races)

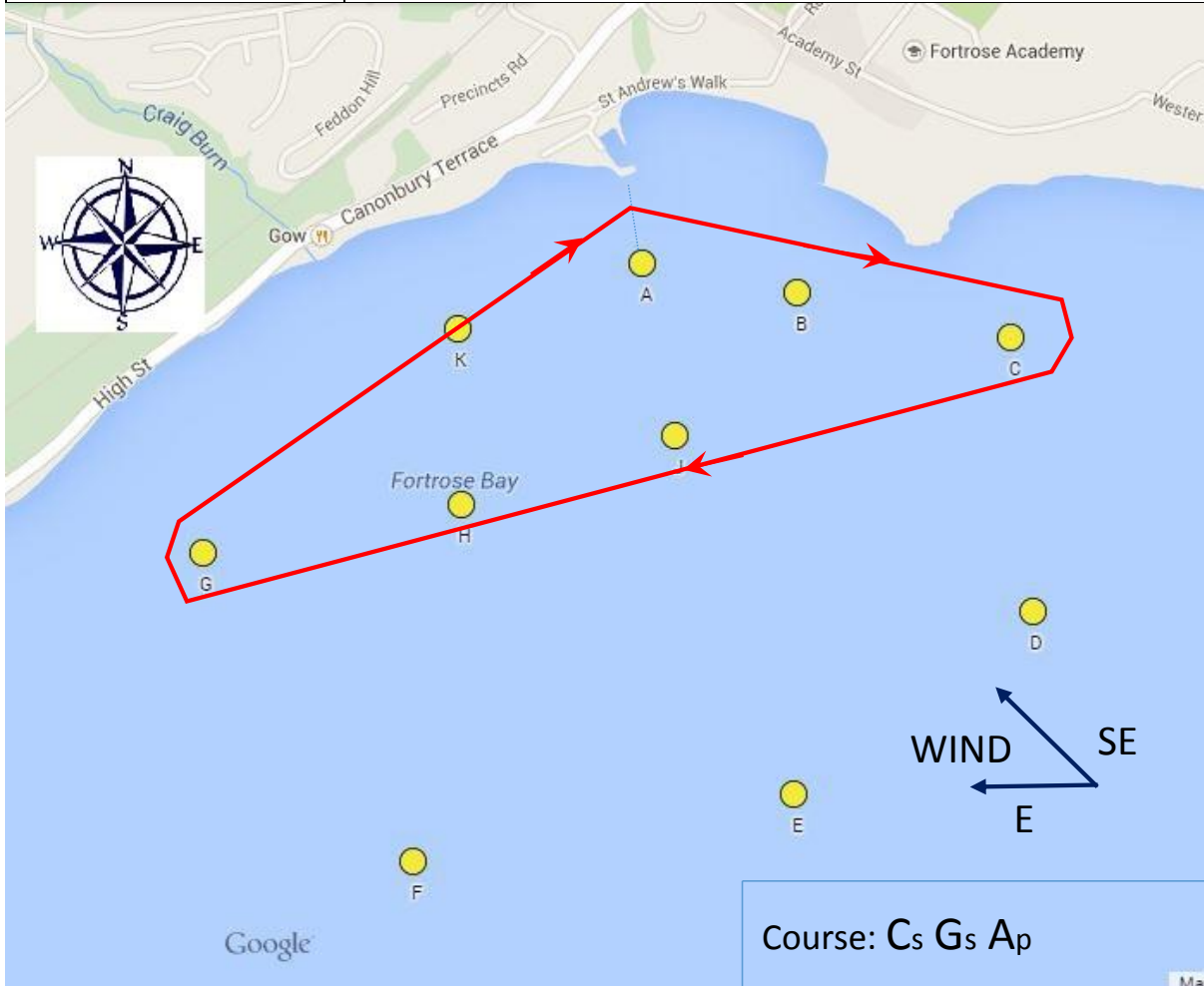
Course Plan 1

Wind Direction	S - SE
Conditions	
Start Line	Between Starters Box and Mark A1 Shift Mark A to Mark A1
Finish Line	Between Starters Box and Mark A1
Course	Ds Gp Ep Ks A1s



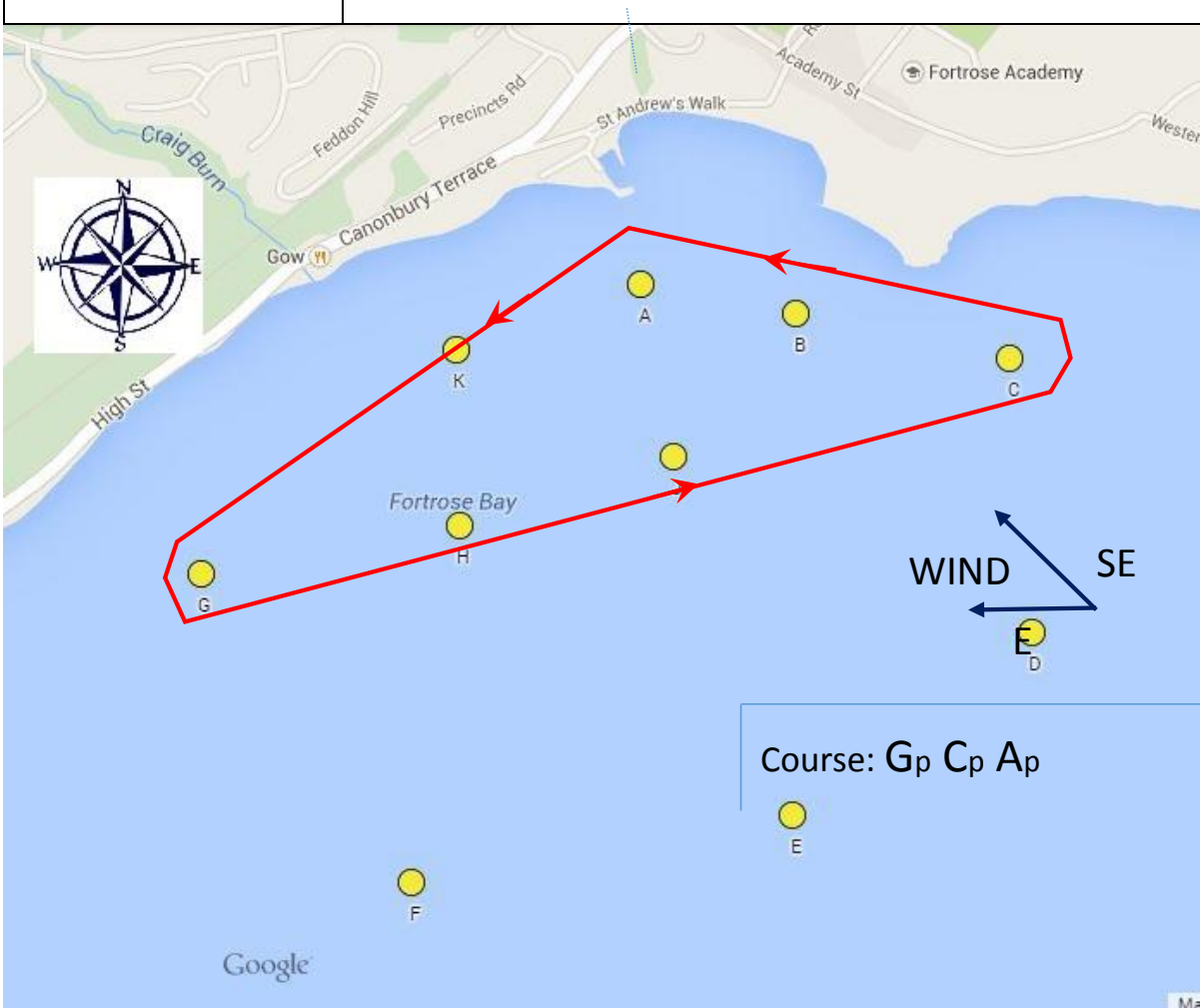
Course Plan 2

Wind Direction	SE - E
Conditions	
Start Line	Between Starters Box and Mark A
Finish Line	Between Starters Box and Mark A
Course	C _s G _s A _s



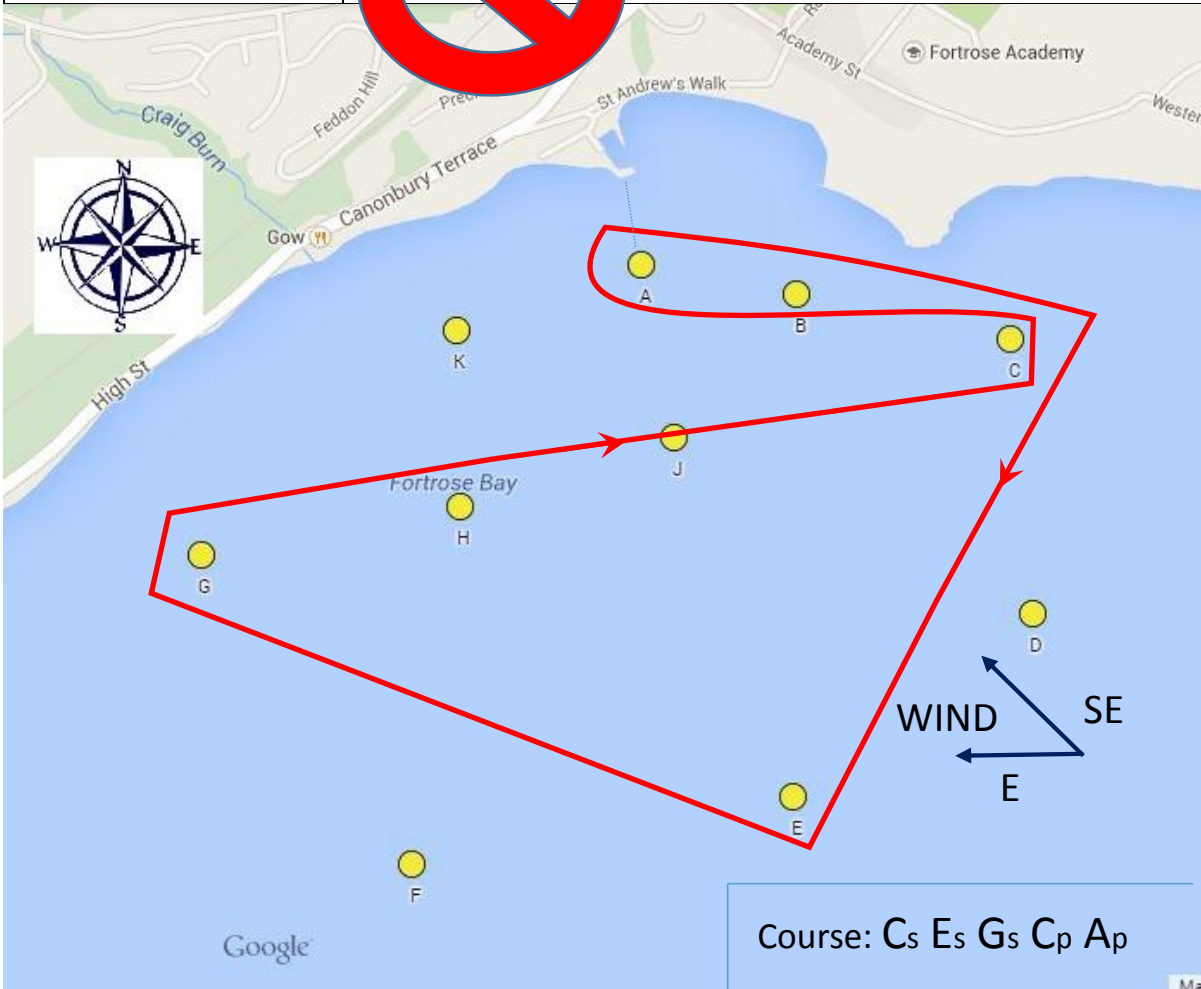
Course Plan 3

Wind Direction	SE - E
Conditions	
Start Line	Between Starters Box and Mark A
Finish Line	Between Starters Box and Mark A
Course	G _p C _p A _p



Course Plan 4

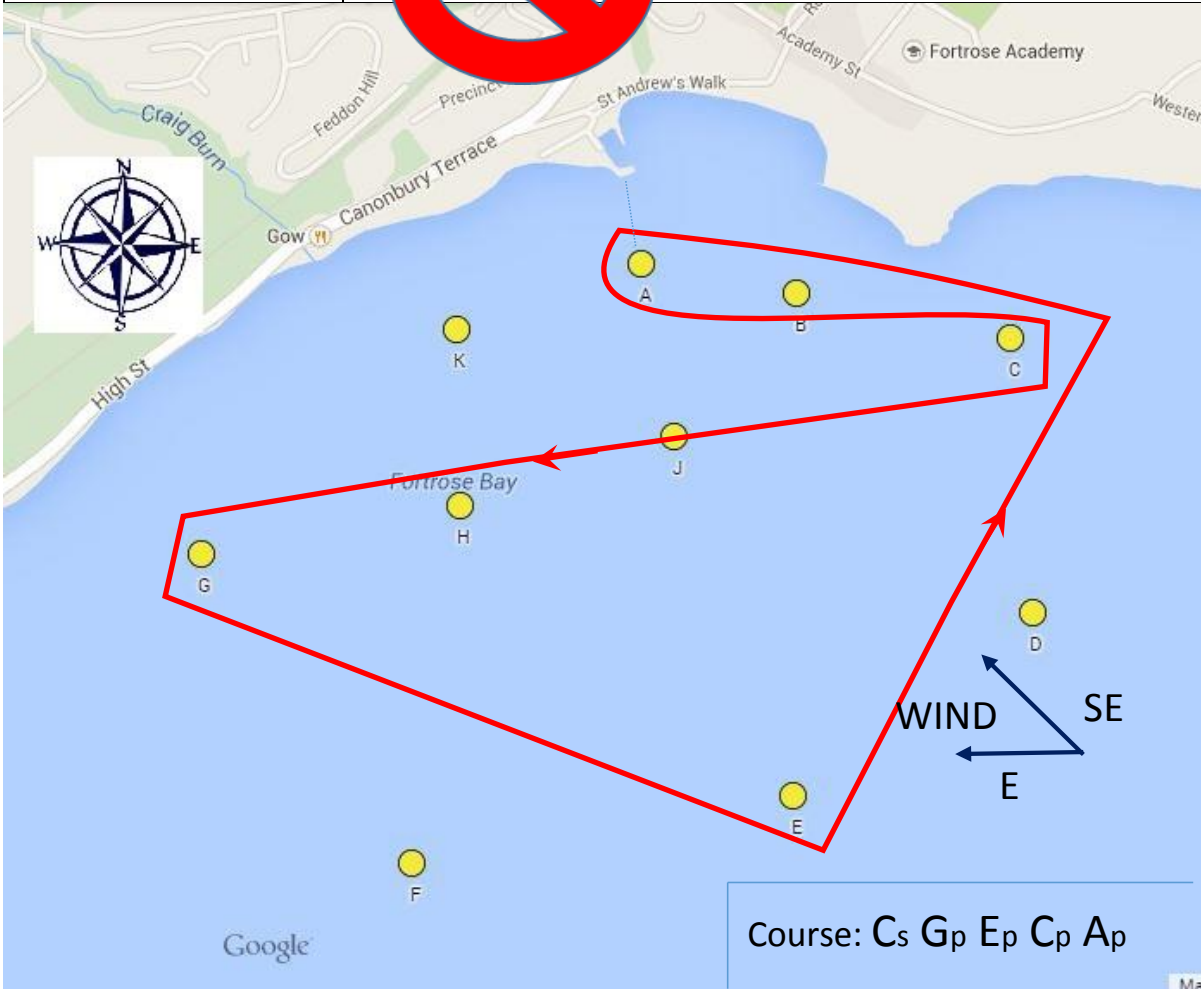
Wind Direction	SE - E
Conditions	
Start Line	Between Starters Box and Mark A From Mark K side
Finish Line	Between Starters Box and Mark A From Mark K side
Course	Es Cp A



Course: Cs Es Gs Cp Ap

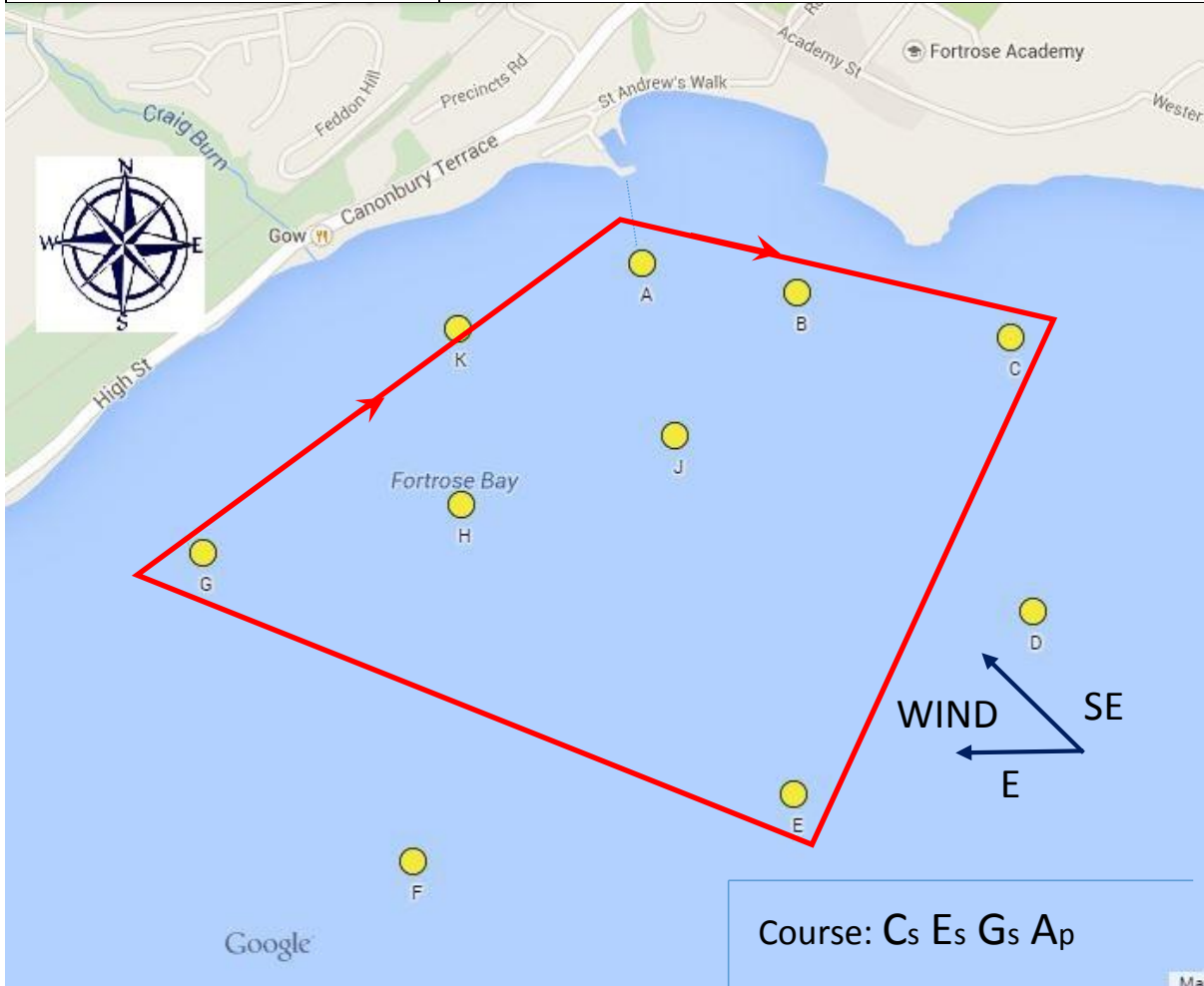
Course Plan 5

Wind Direction	SE - E
Conditions	
Start Line	Between Starters Box and Mark A From Mark K side
Finish Line	Between Starters Box and Mark A From Mark K side
Course	Cs Gp Ep Cp Ap



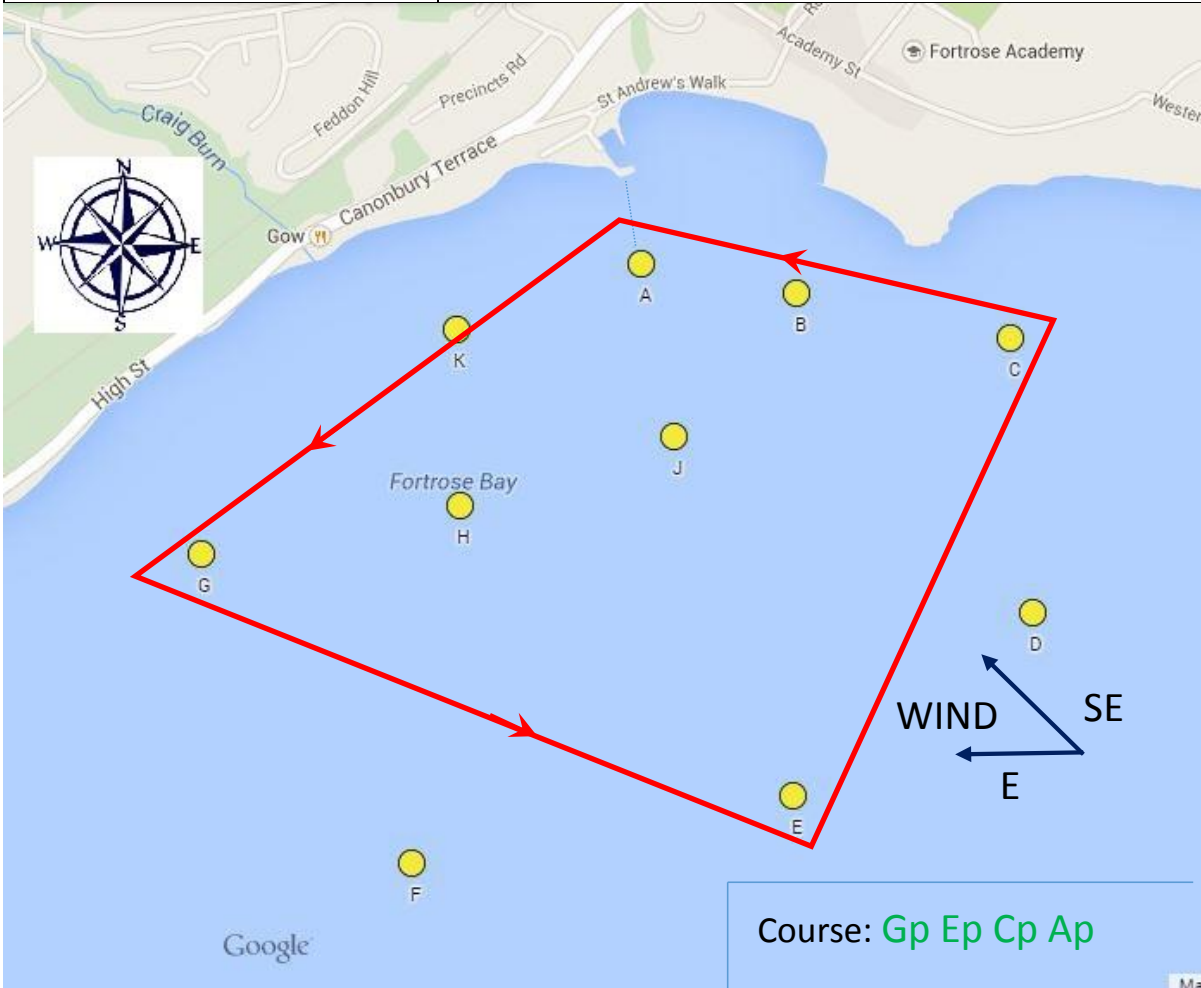
Course Plan 6

Wind Direction	SE - E
Conditions	
Start Line	Between Starters Box and Mark A
Finish Line	Between Starters Box and Mark A
Course	C _s E _s G _s A _p



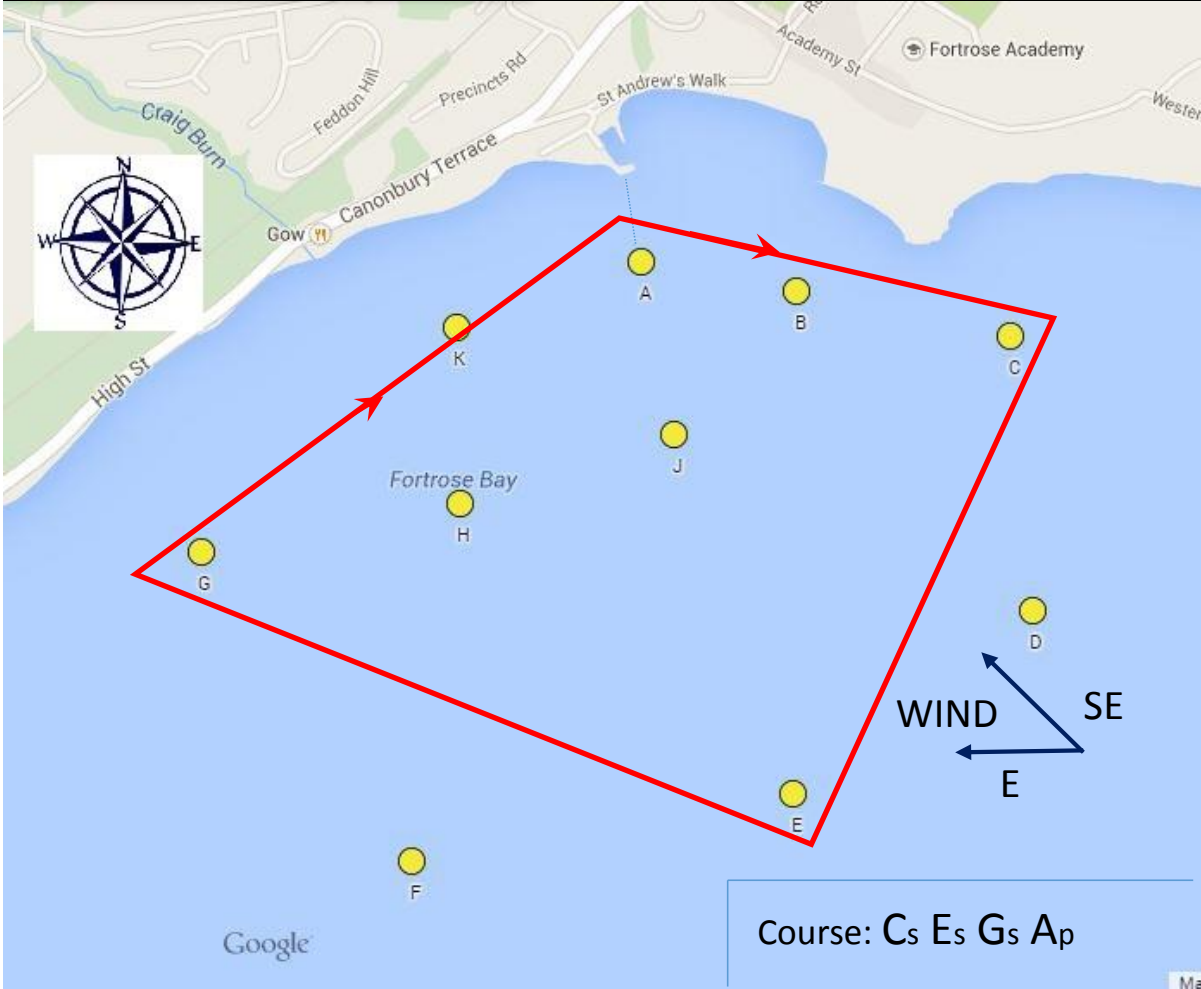
Course Plan 7

Wind Direction	SE - E
Conditions	
Start Line	Between Starters Box and Mark A
Finish Line	Between Starters Box and Mark A
Course	Gp Ep Cp Ap



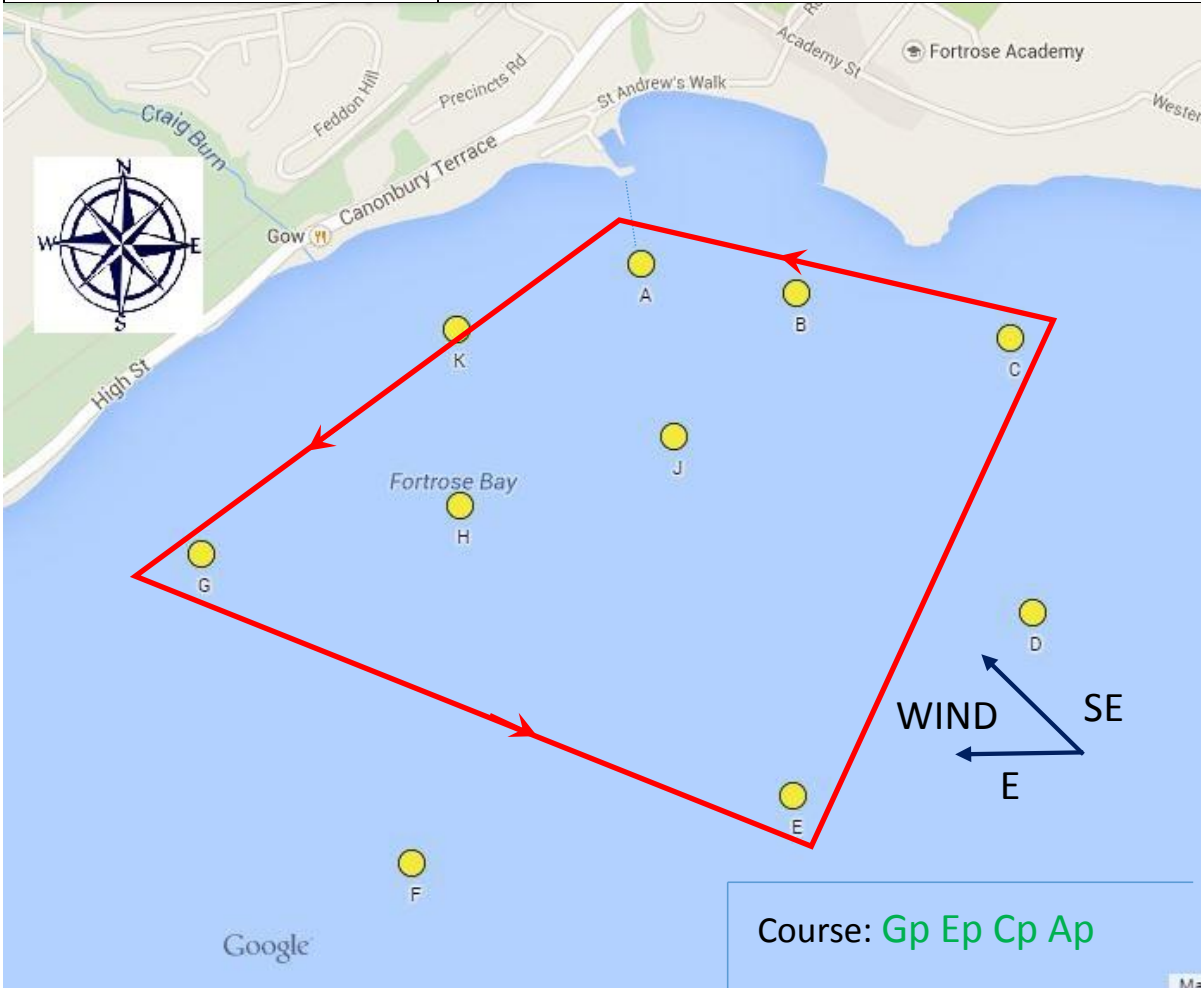
Course Plan 8

Wind Direction	SE - E
Conditions	
Start Line	Between Starters Box and Mark A
Finish Line	Between Starters Box and Mark A
Course	C _s E _s G _s A _p



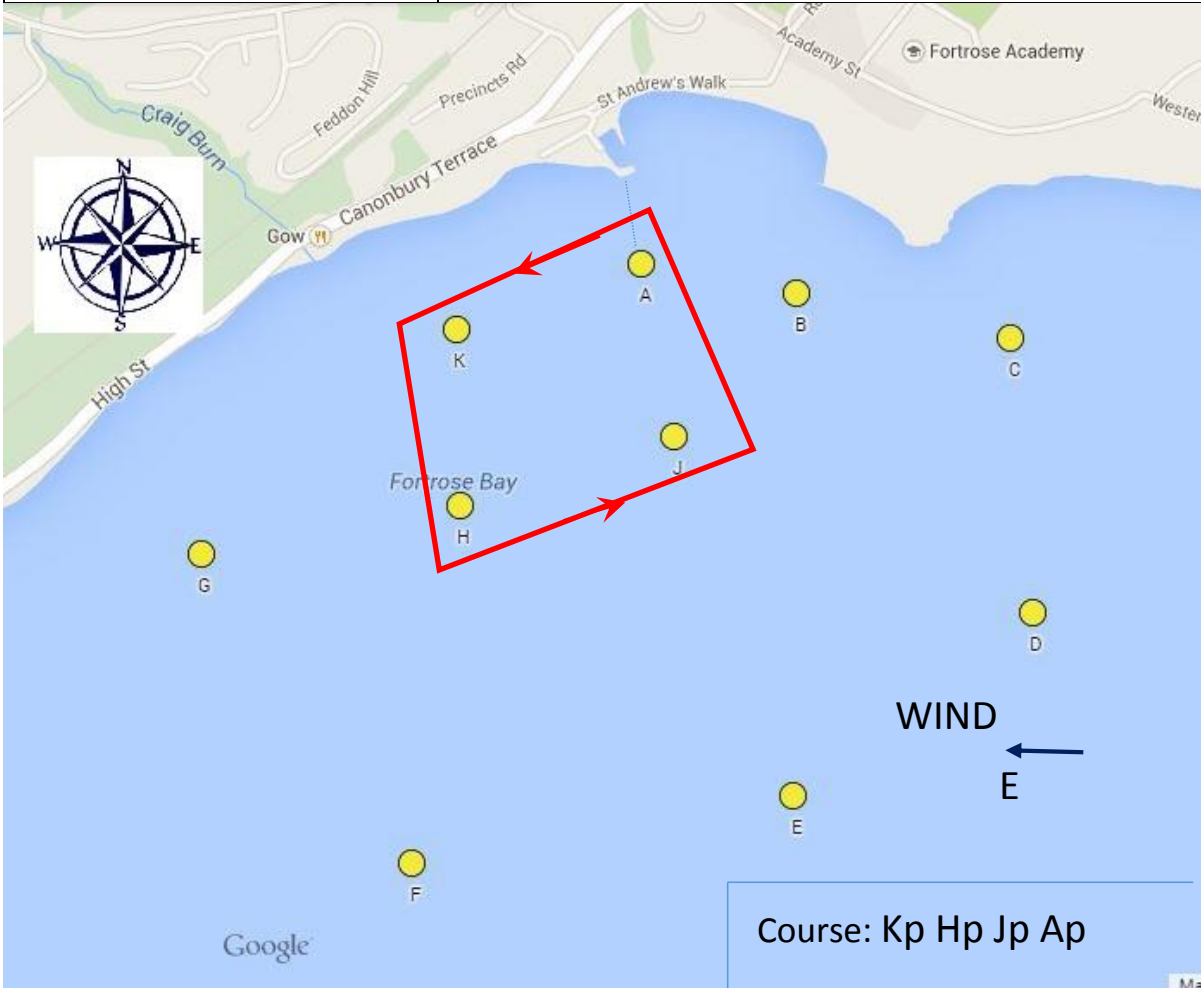
Course Plan 9

Wind Direction	SE - E
Conditions	
Start Line	Between Starters Box and Mark A
Finish Line	Between Starters Box and Mark A
Course	Gp Ep Cp Ap



Course Plan 10

Wind Direction	E
Conditions	
Start Line	Between Starters Box and Mark A
Finish Line	Between Starters Box and Mark A
Course	Kp Hp Jp Ap



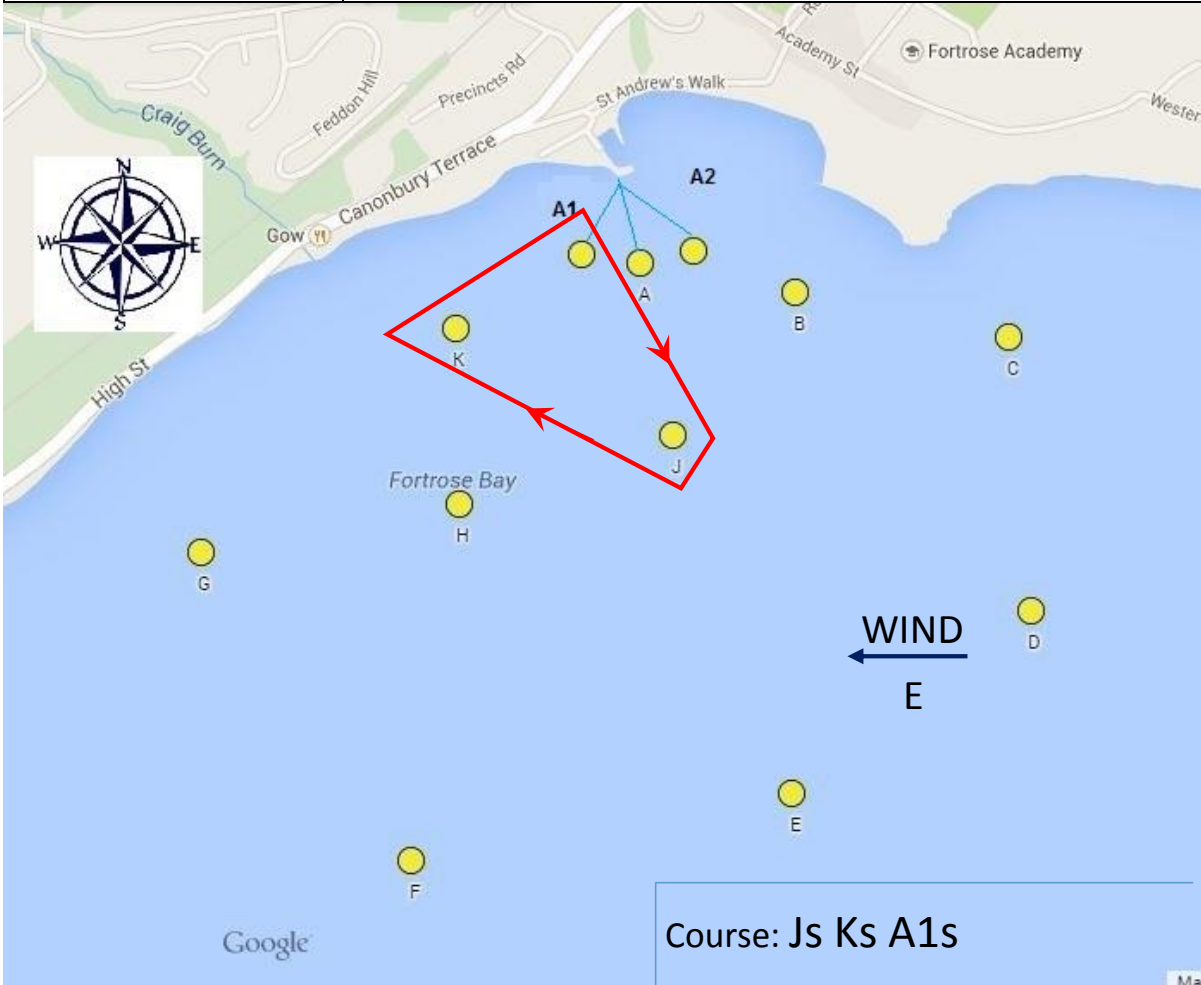
Course Plan 11

Wind Direction	E
Conditions	
Start Line	Between Starters Box and Mark A2
Finish Line	Between Starters Box and Mark A2
Course	Js Hs Ks A2s



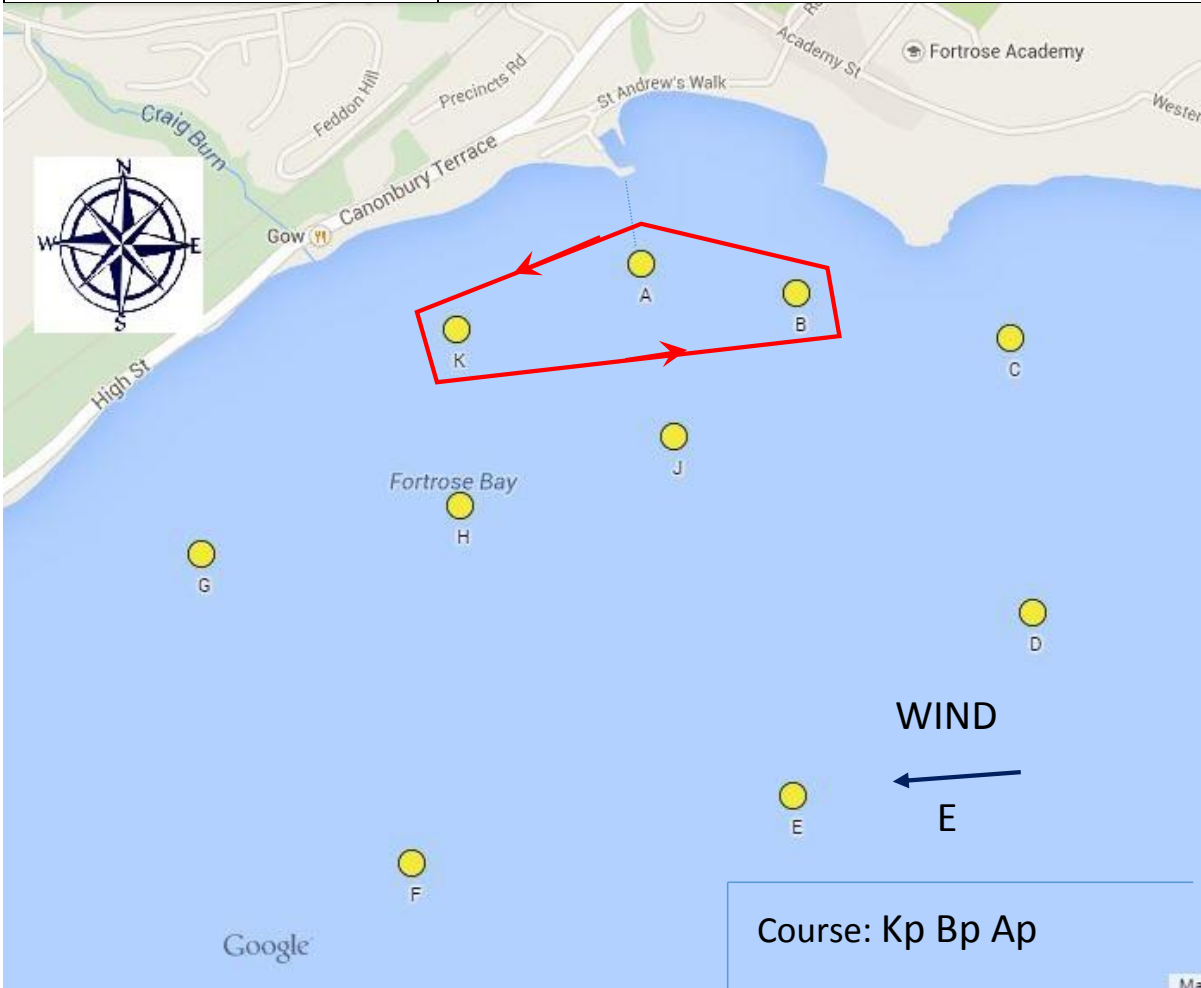
Course Plan 12

Wind Direction	E
Conditions	
Start Line	Between Starters Box and Mark A1 Shift Mark A to Mark A1
Finish Line	Between Starters Box and Mark A1
Course	Js Ks A1s



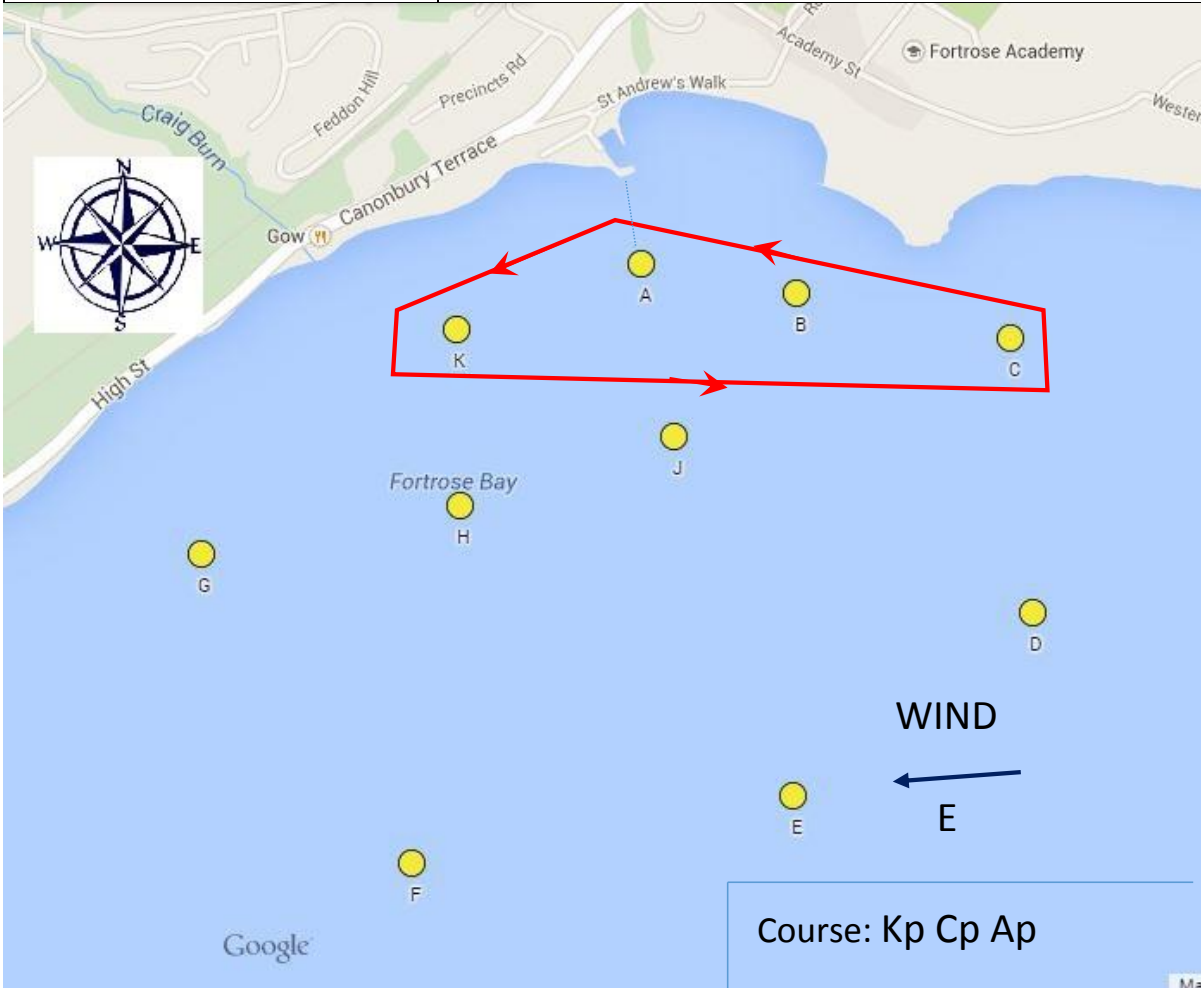
Course Plan 13

Wind Direction	E
Conditions	
Start Line	Between Starters Box and Mark A
Finish Line	Between Starters Box and Mark A
Course	Kp Bp Ap



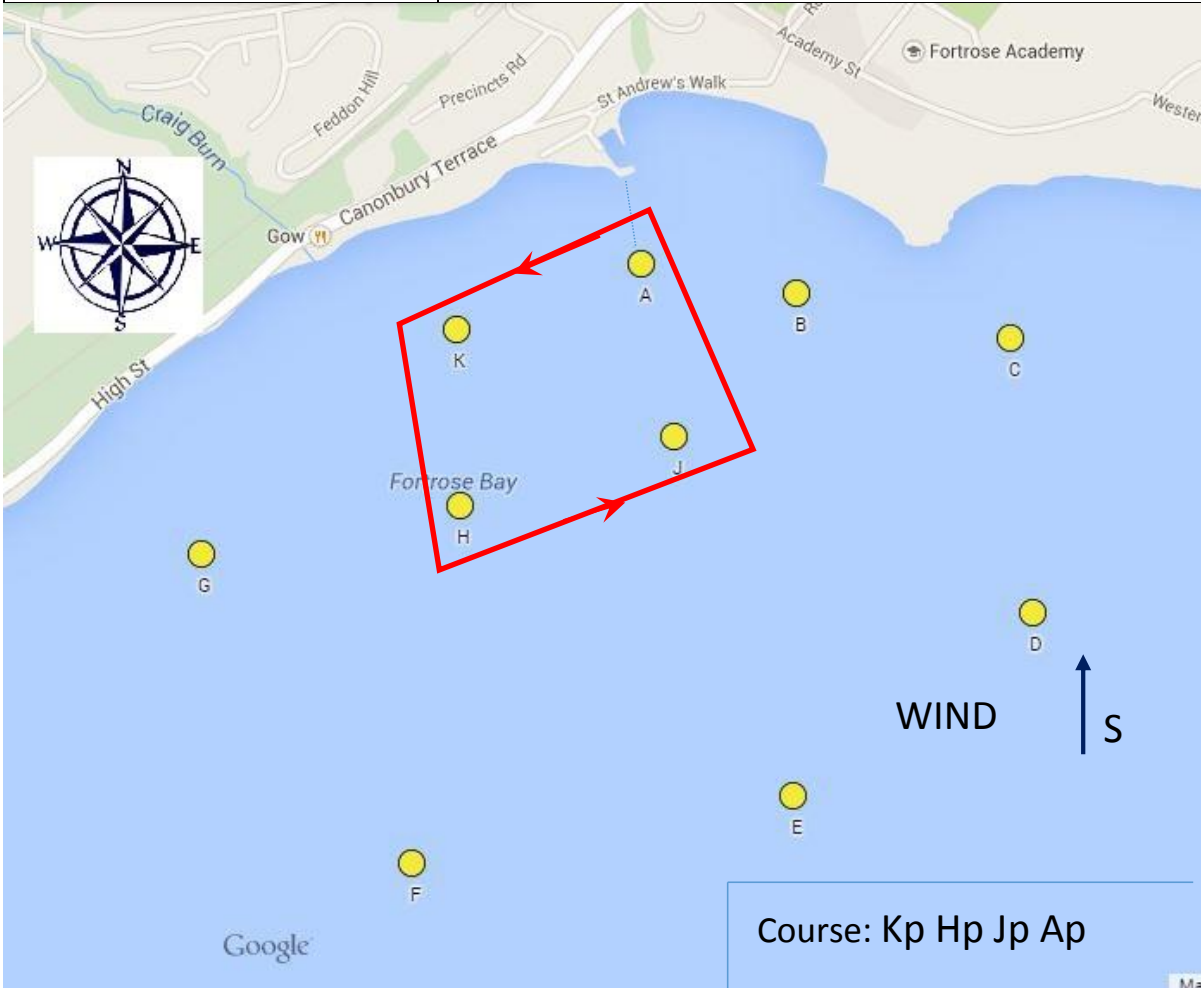
Course Plan 14

Wind Direction	E
Conditions	
Start Line	Between Starters Box and Mark A
Finish Line	Between Starters Box and Mark A
Course	Kp Cp Ap



Course Plan 15

Wind Direction	S
Conditions	
Start Line	Between Starters Box and Mark A
Finish Line	Between Starters Box and Mark A
Course	Kp Hp Jp Ap



Course Plan 16

Wind Direction	S
Conditions	
Start Line	Between Starters Box and Mark A2
Finish Line	Between Starters Box and Mark A2
Course	Js Hs Ks A2s



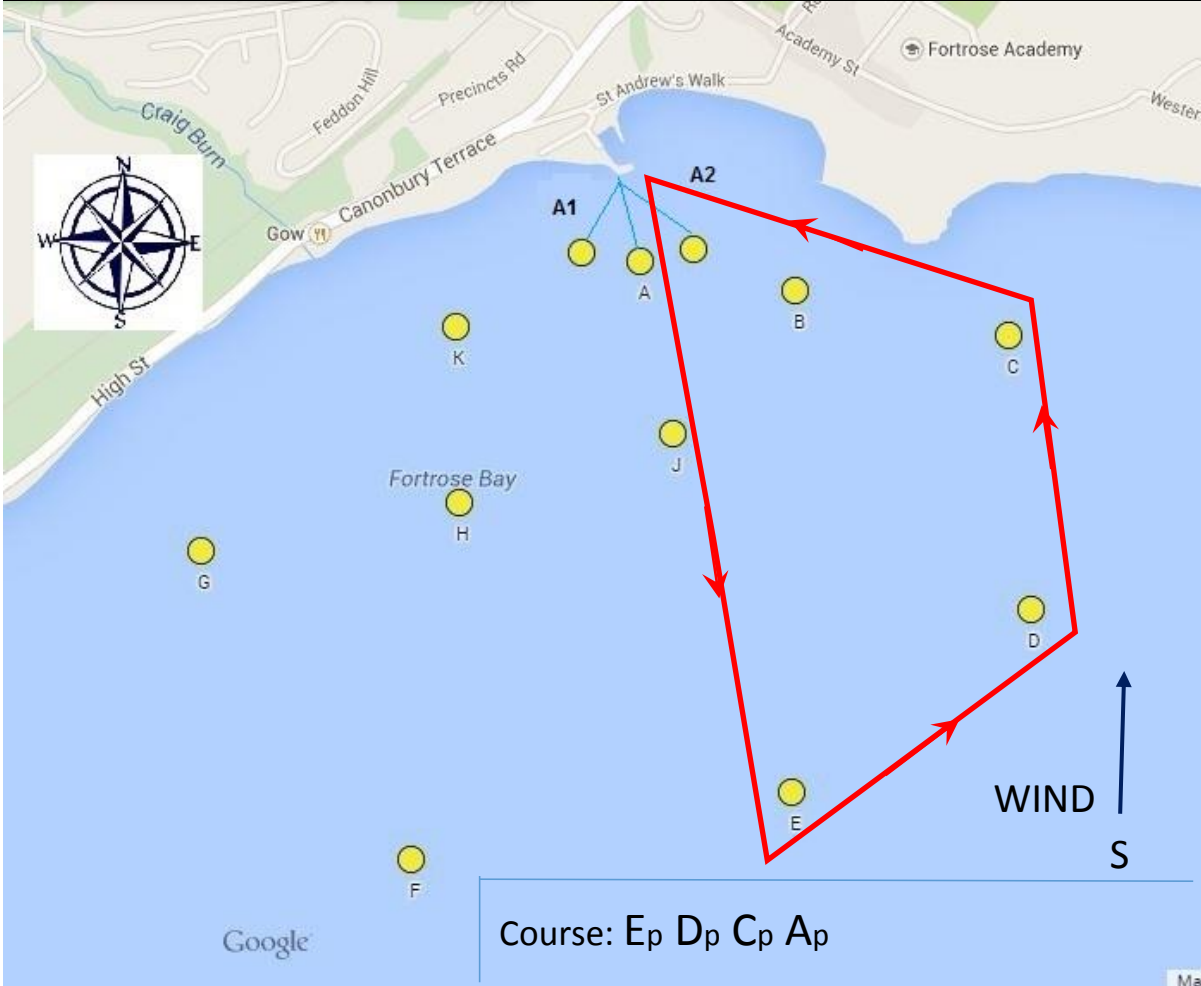
Course Plan 17

Wind Direction	S
Conditions	
Start Line	Between Starters Box and Mark A1 Shift Mark A to Mark A1
Finish Line	Between Starters Box and Mark A1
Course	Js Ks A1s



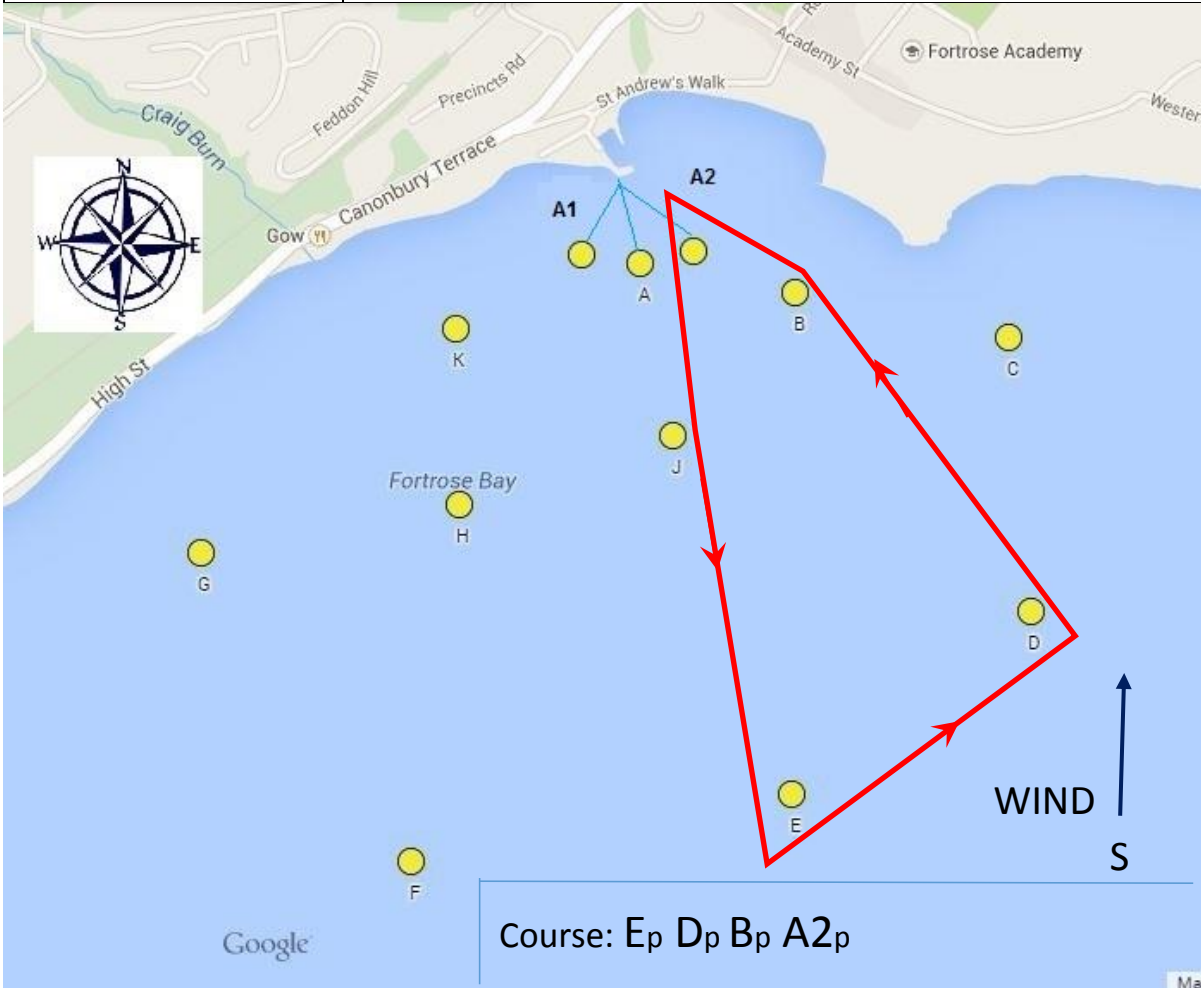
Course Plan 18

Wind Direction	S
Conditions	
Start Line	Between Starters Box and Mark A2
Finish Line	Between Starters Box and Mark A2
Course	E _p D _p C _p A2 _p



Course Plan 19

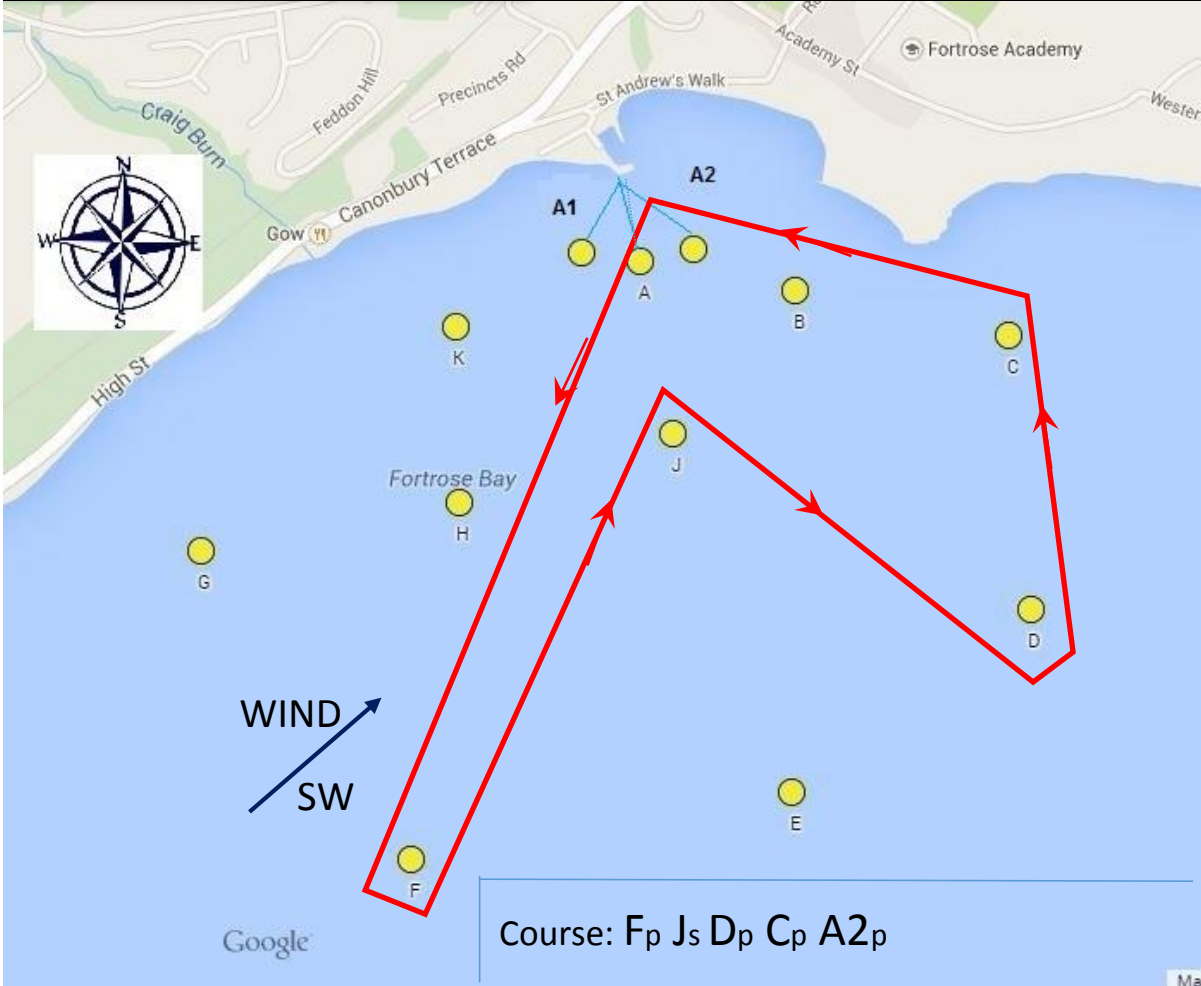
Wind Direction	S
Conditions	
Start Line	Between Starters Box and Mark A2
Finish Line	Between Starters Box and Mark A2
Course	E _p D _p B _p A2 _p



Course: E_p D_p B_p A2_p

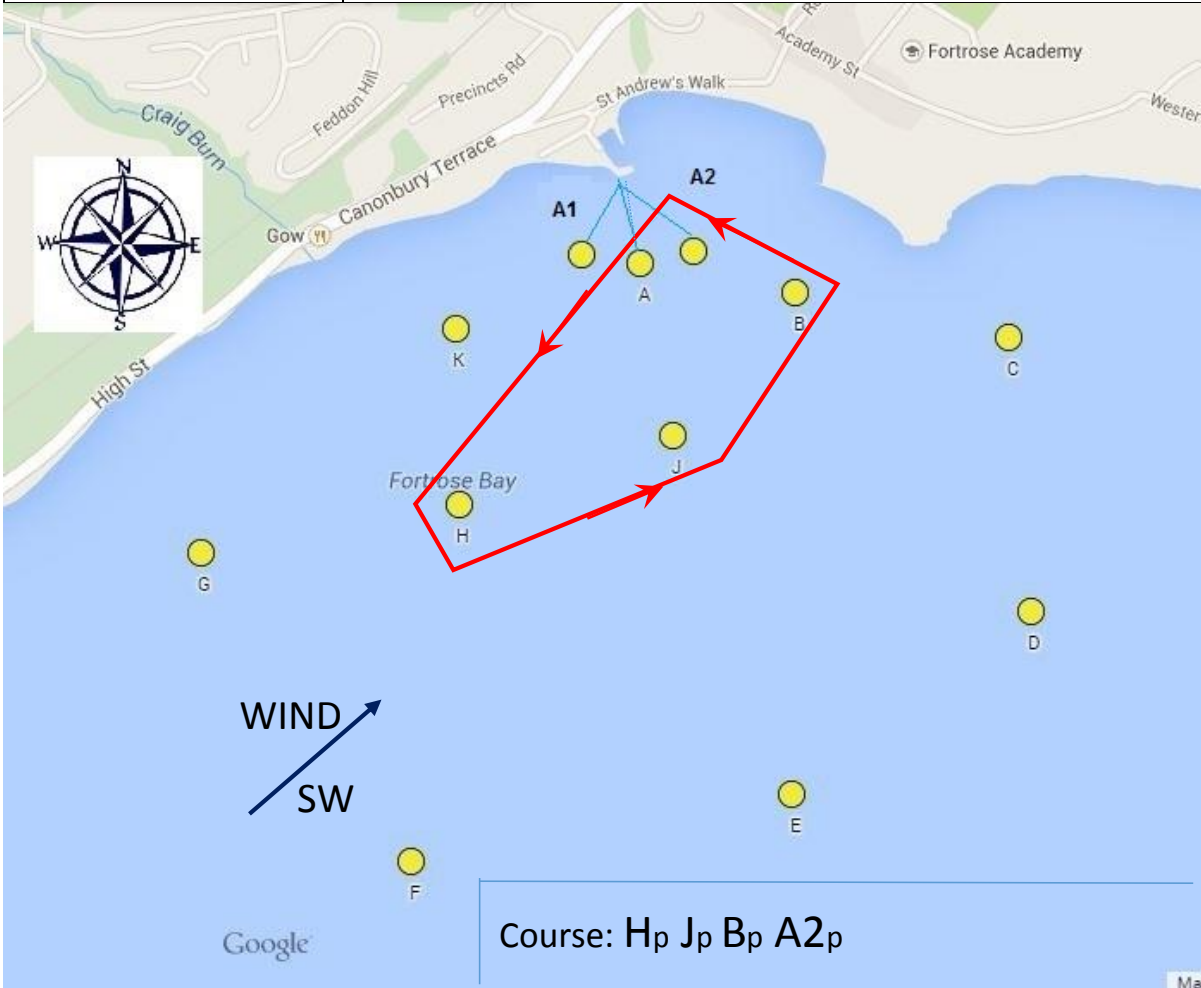
Course Plan 20

Wind Direction	SW
Conditions	
Start Line	Between Starters Box and Mark A2
Finish Line	Between Starters Box and Mark A2
Course	F _p J _s D _p C _p A2 _p



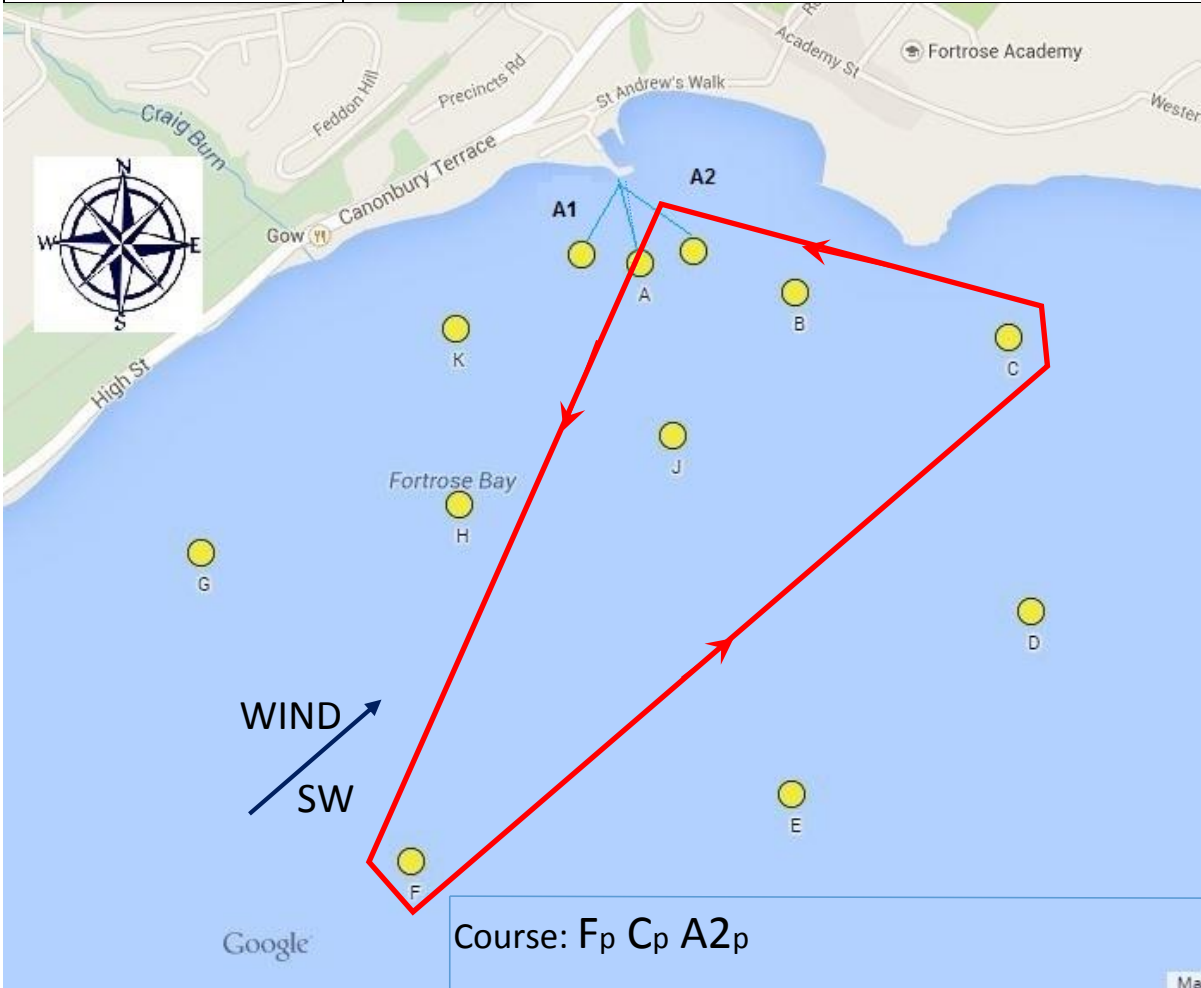
Course Plan 21

Wind Direction	SW
Conditions	
Start Line	Between Starters Box and Mark A2
Finish Line	Between Starters Box and Mark A2
Course	H _p J _p B _p A2 _p



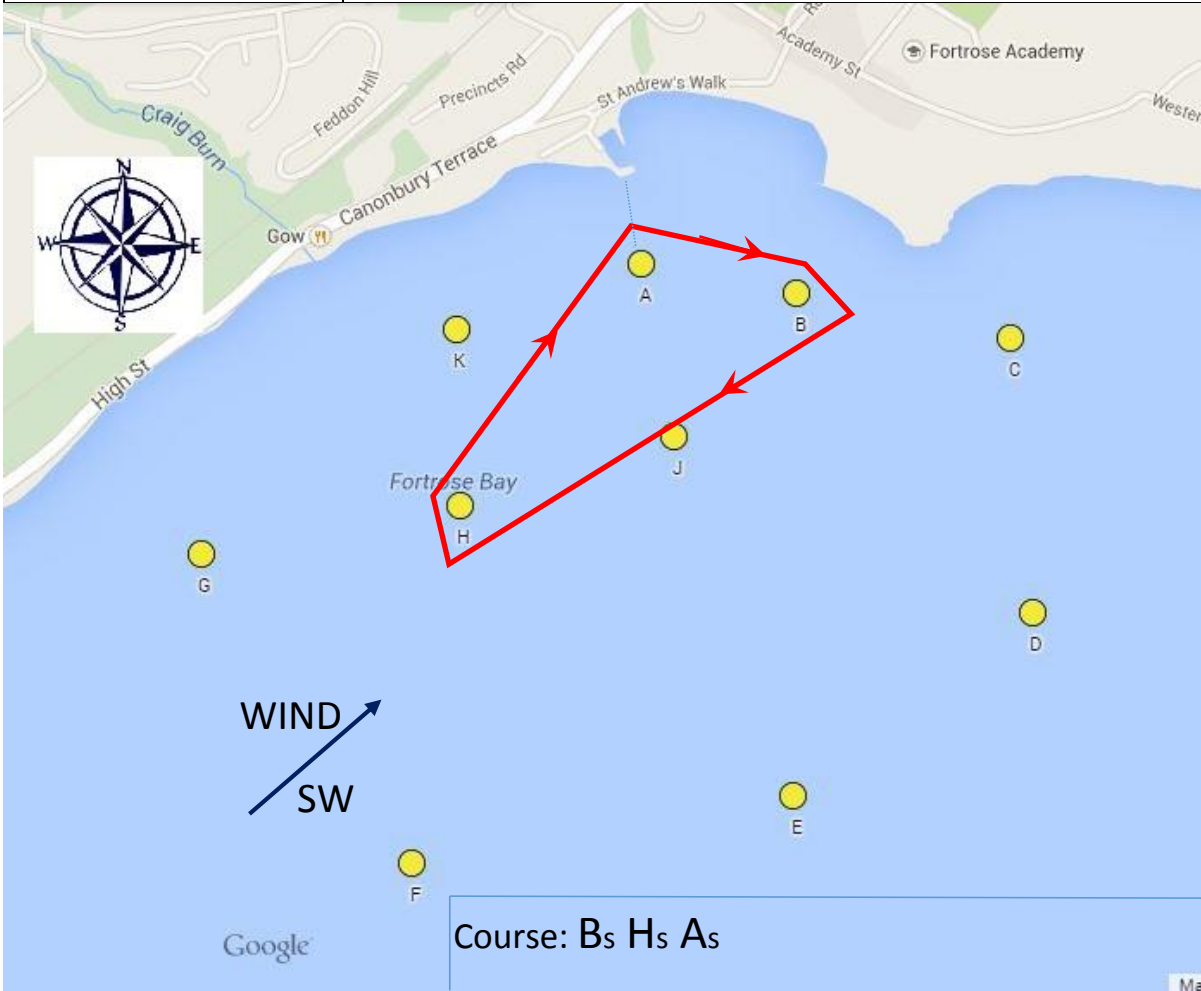
Course Plan 22

Wind Direction	SW
Conditions	
Start Line	Between Starters Box and Mark A2
Finish Line	Between Starters Box and Mark A2
Course	F _p C _p A2 _p



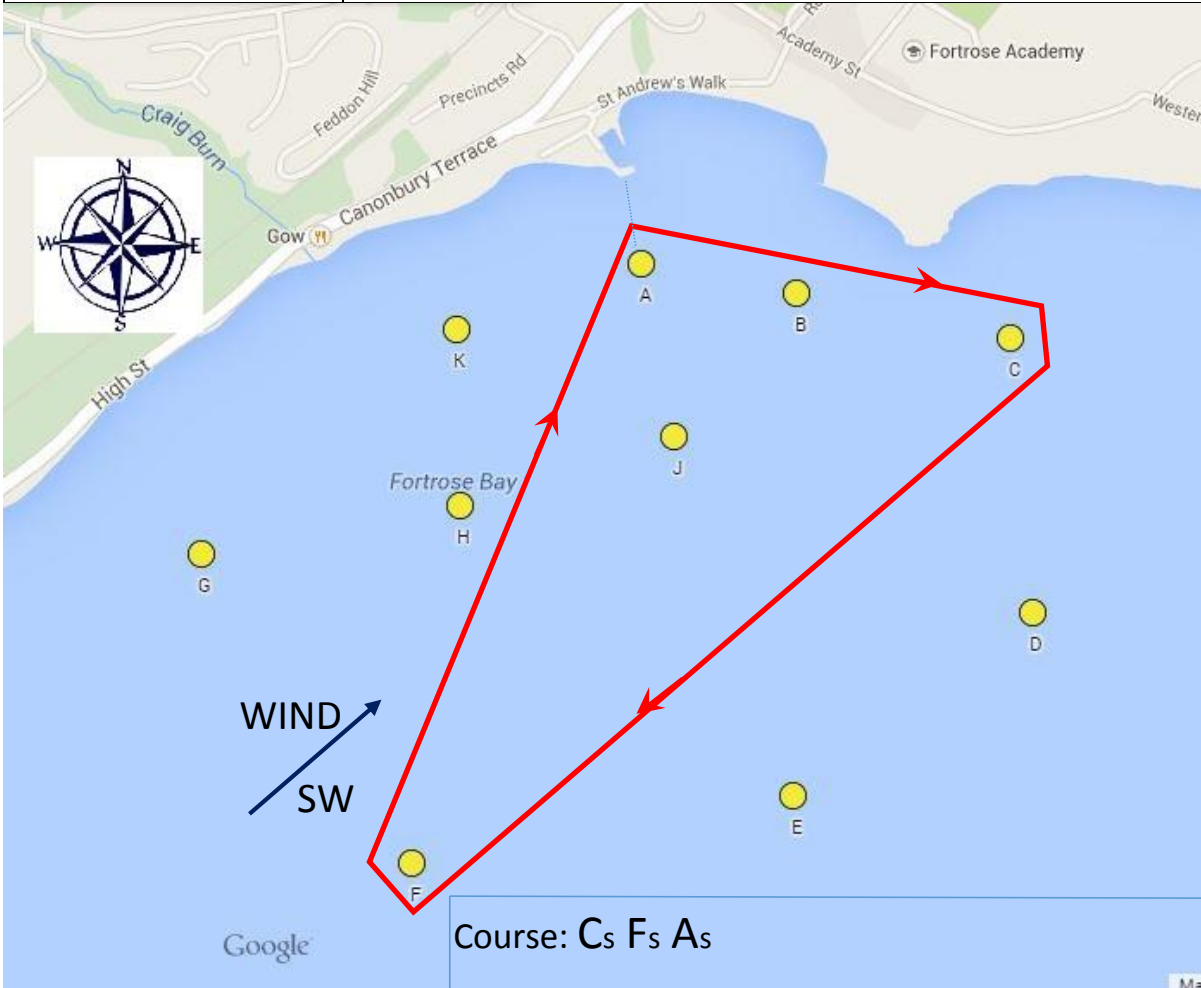
Course Plan 23

Wind Direction	SW
Conditions	
Start Line	Between Starters Box and Mark A
Finish Line	Between Starters Box and Mark A
Course	B _s H _s A _s



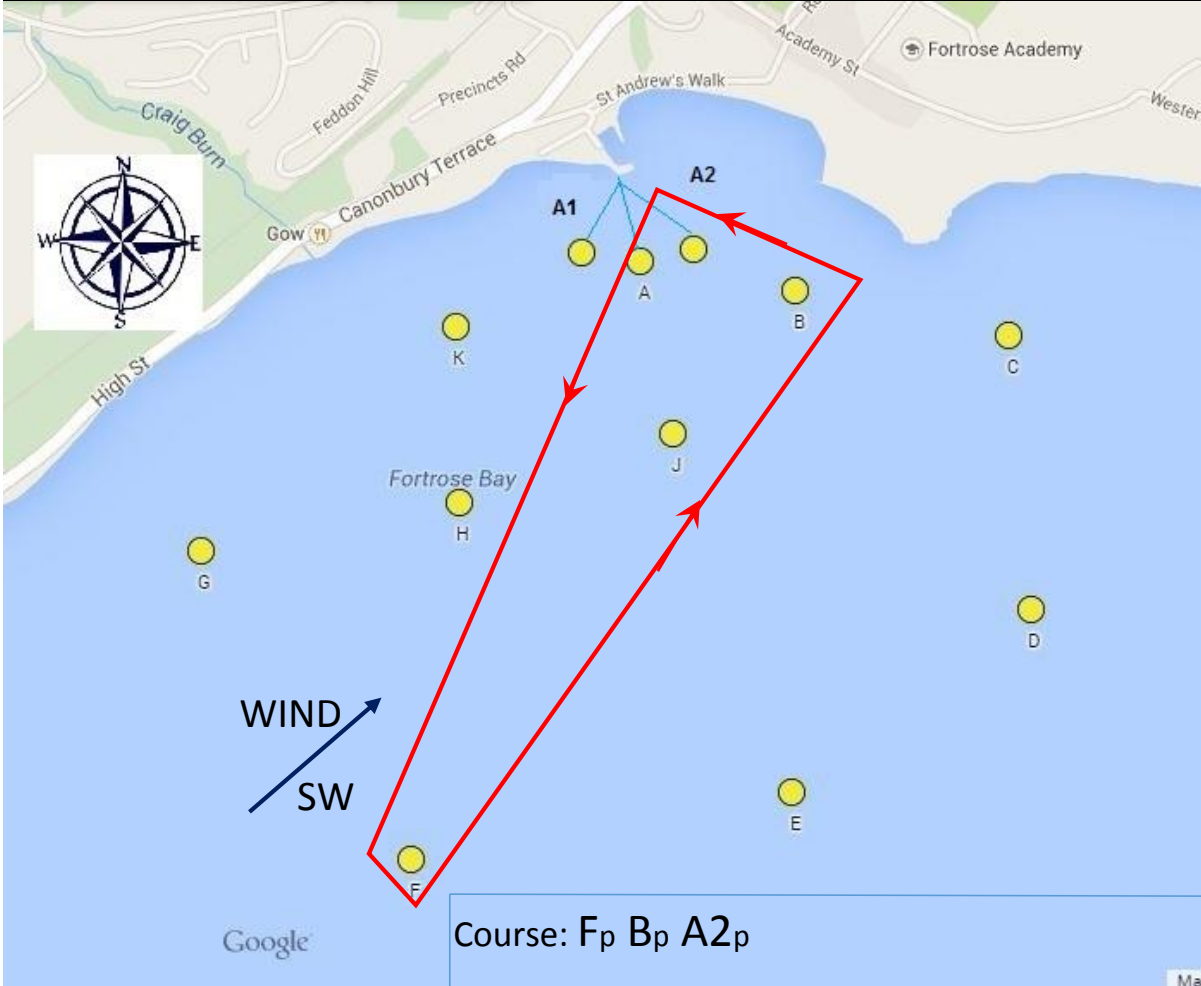
Course Plan 24

Wind Direction	SW
Conditions	
Start Line	Between Starters Box and Mark A
Finish Line	Between Starters Box and Mark A
Course	C _s F _s A _s



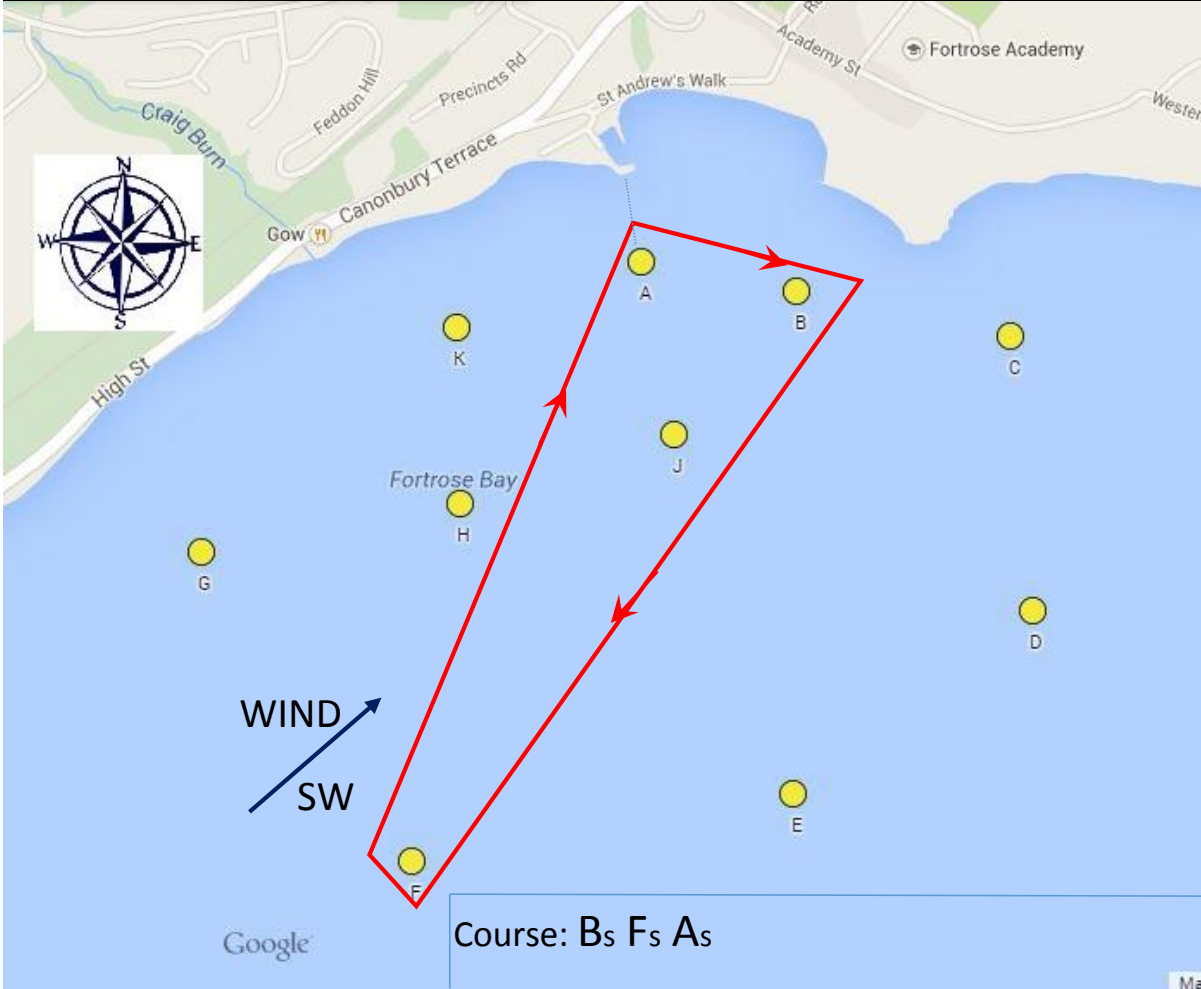
Course Plan 25

Wind Direction	SW
Conditions	
Start Line	Between Starters Box and Mark A2
Finish Line	Between Starters Box and Mark A2
Course	F _p B _p A2 _p



Course Plan 26

Wind Direction	SW
Conditions	
Start Line	Between Starters Box and Mark A
Finish Line	Between Starters Box and Mark A
Course	B _s F _s A _s



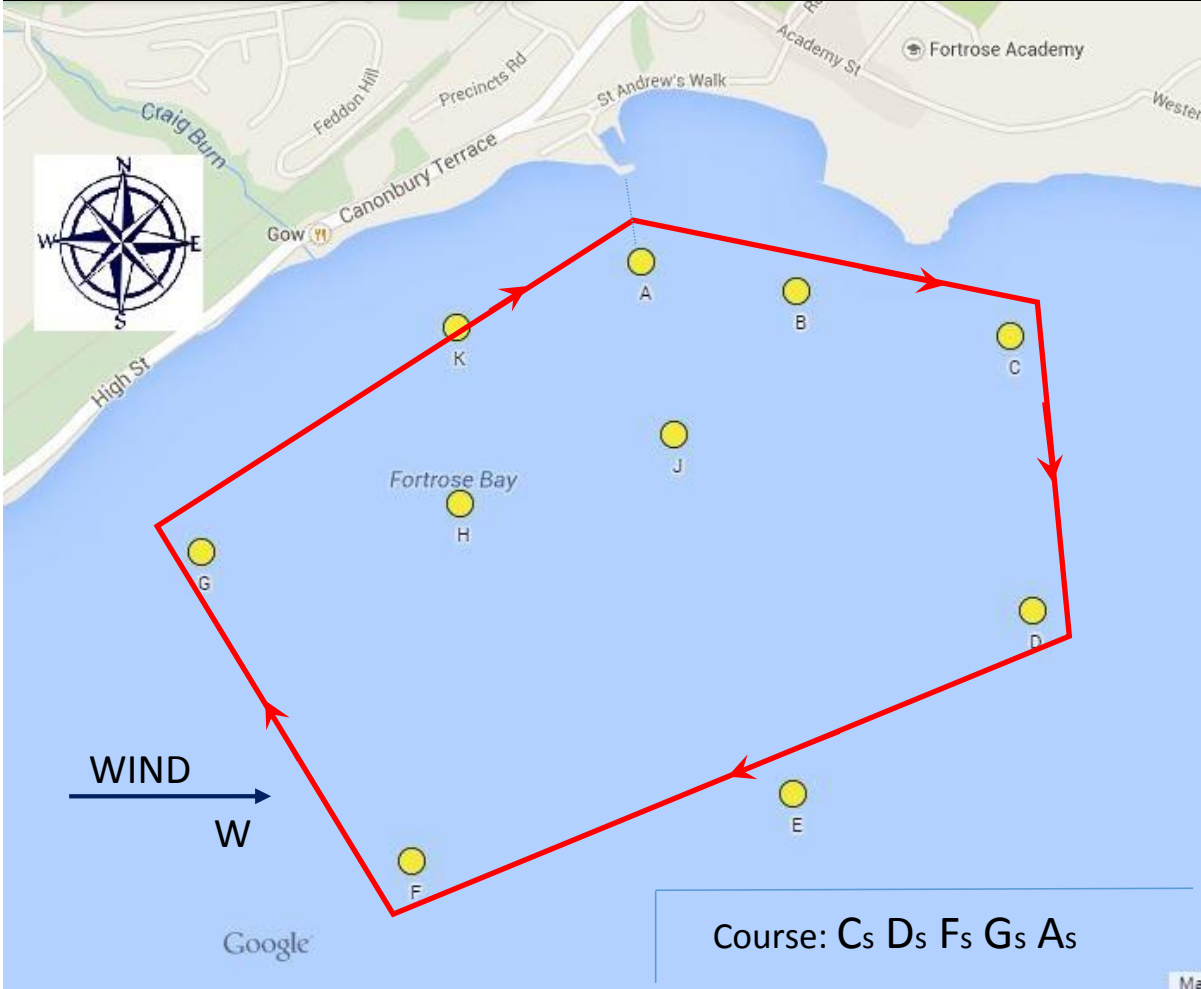
Course Plan 27

Wind Direction	W
Conditions	
Start Line	Between Starters Box and Mark A
Finish Line	Between Starters Box and Mark A
Course	G _p F _p D _p C _p A _p



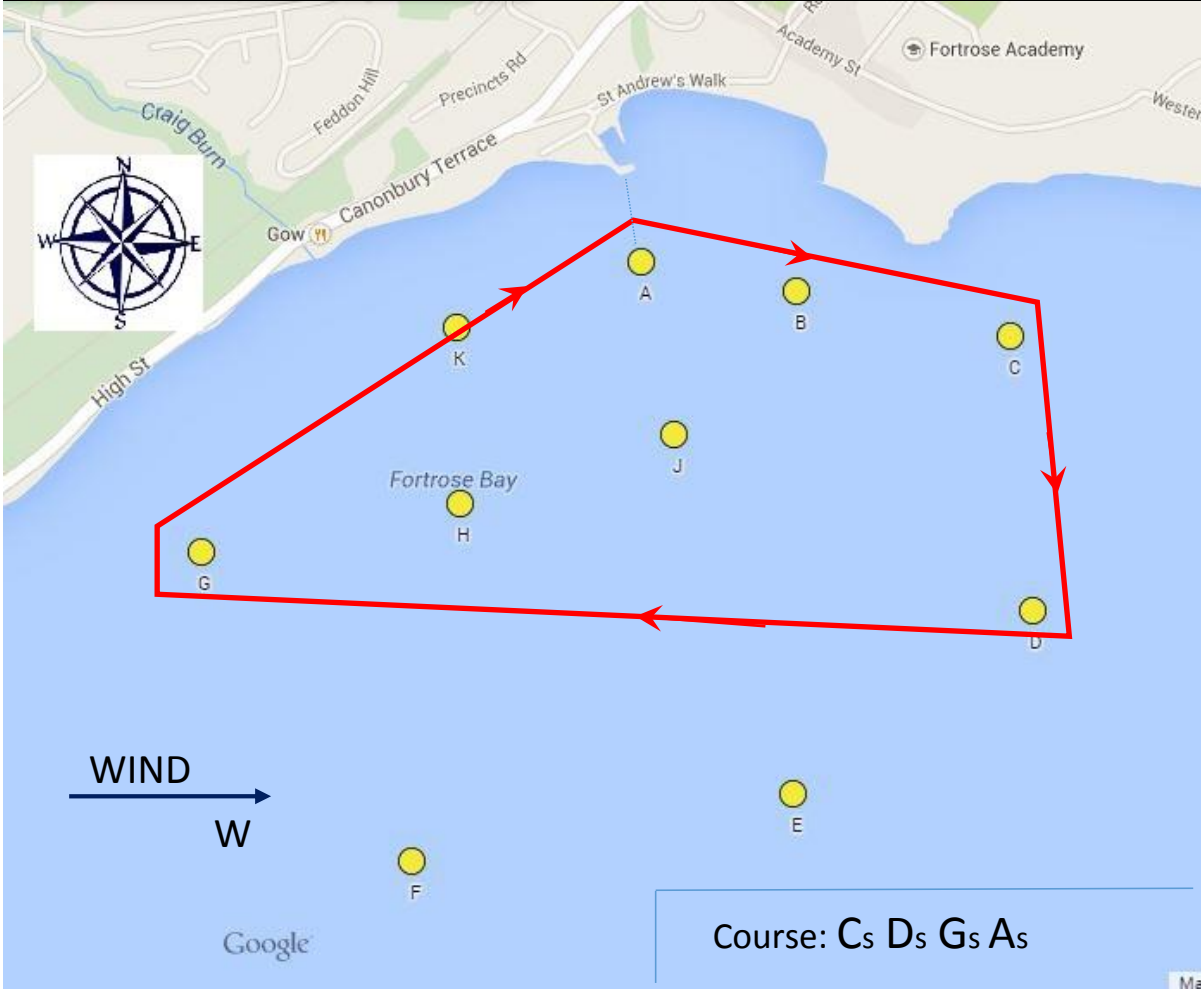
Course Plan 28

Wind Direction	W
Conditions	
Start Line	Between Starters Box and Mark A
Finish Line	Between Starters Box and Mark A
Course	C _s D _s F _s G _s A _s



Course Plan 29

Wind Direction	W
Conditions	
Start Line	Between Starters Box and Mark A
Finish Line	Between Starters Box and Mark A
Course	C _s D _s G _s A _s



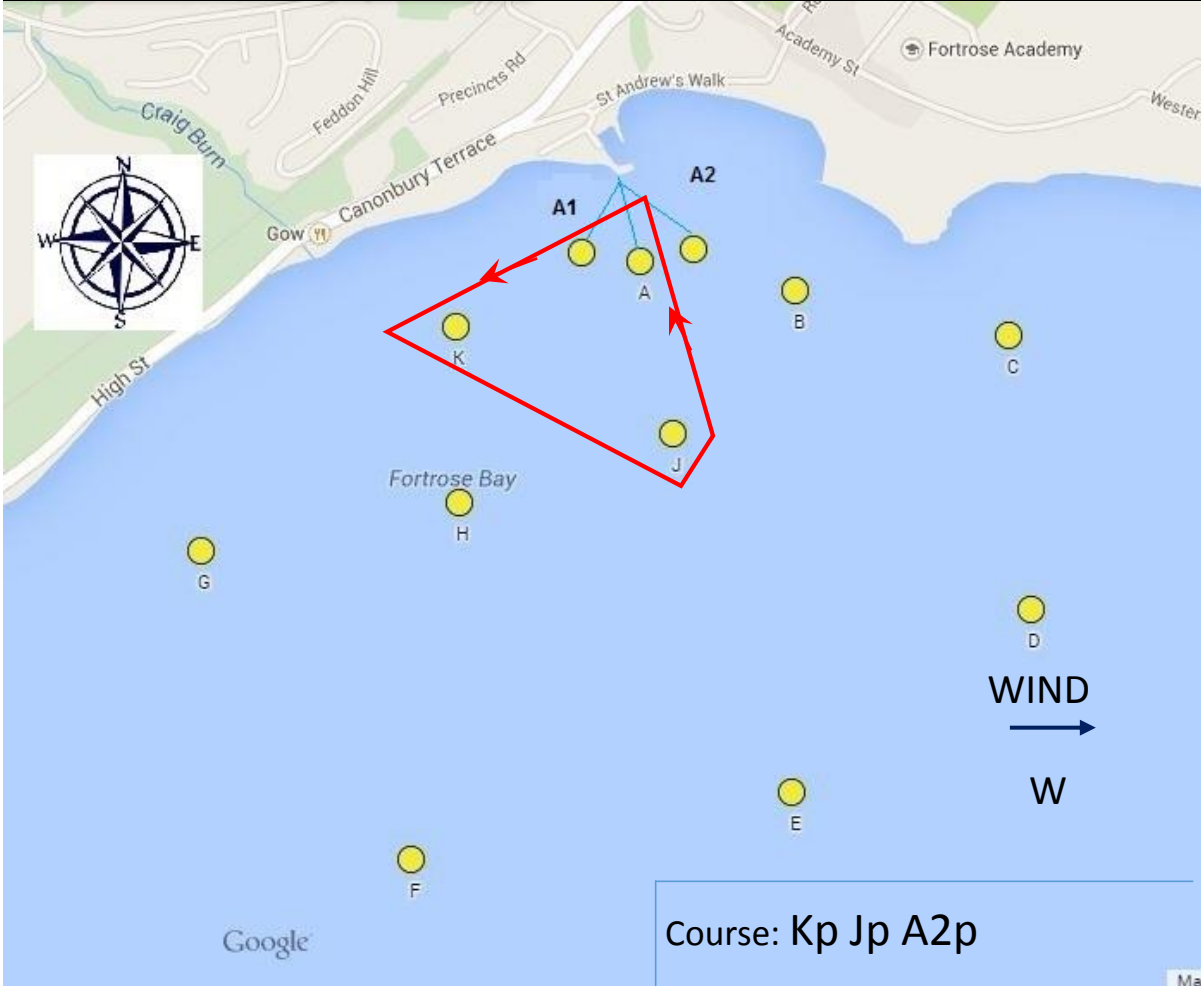
Course Plan 30

Wind Direction	W
Conditions	
Start Line	Between Starters Box and Mark A
Finish Line	Between Starters Box and Mark A
Course	Kp Bp Ap



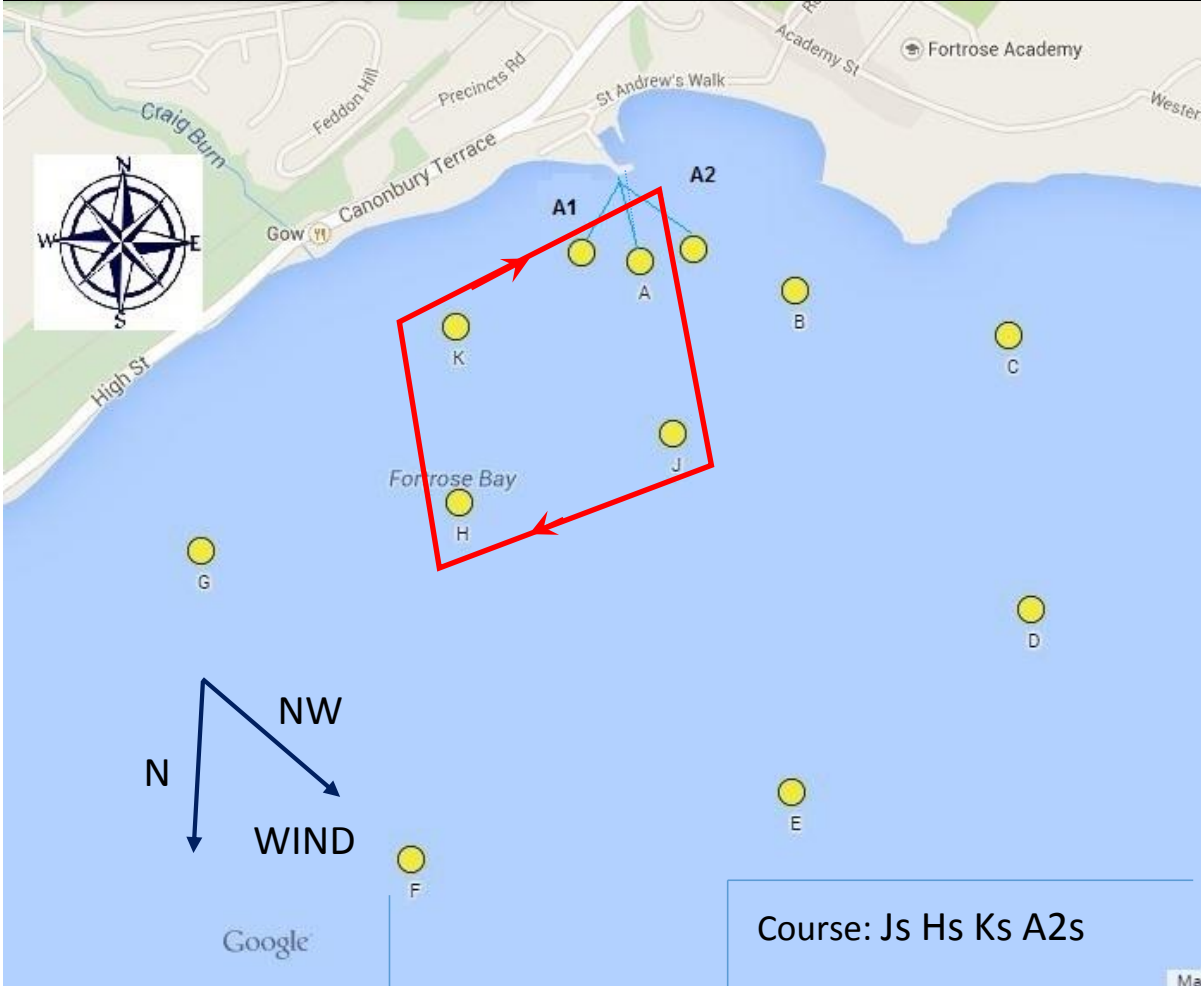
Course Plan 31

Wind Direction	W
Conditions	
Start Line	Between Starters Box and Mark A2
Finish Line	Between Starters Box and Mark A2
Course	Kp Jp A2p



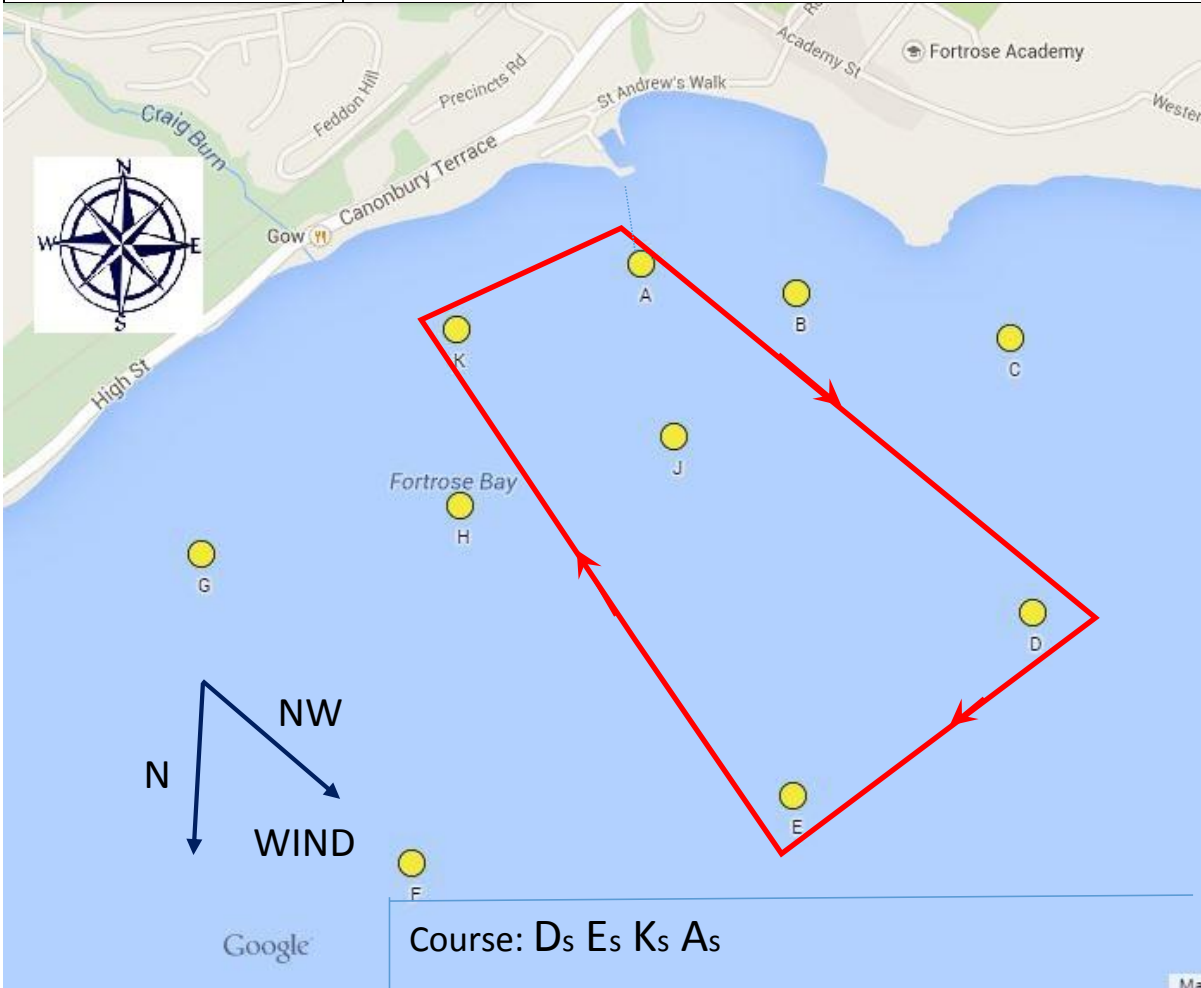
Course Plan 32

Wind Direction	N - NW
Conditions	
Start Line	Between Starters Box and Mark A2
Finish Line	Between Starters Box and Mark A2
Course	Js Hs Ks A2s



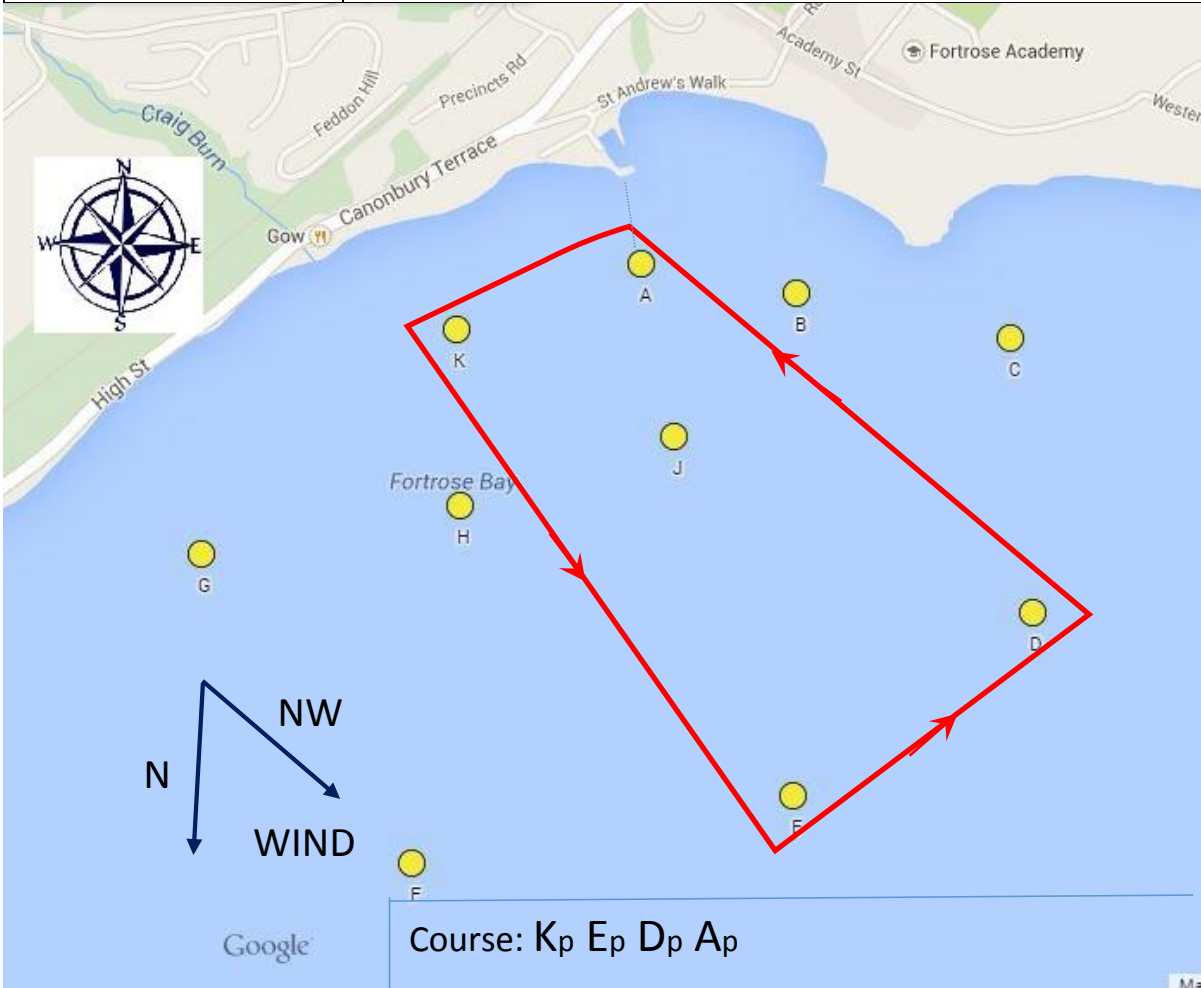
Course Plan 33

Wind Direction	N - NW
Conditions	
Start Line	Between Starters Box and Mark A
Finish Line	Between Starters Box and Mark A
Course	D _s E _s K _s A _s



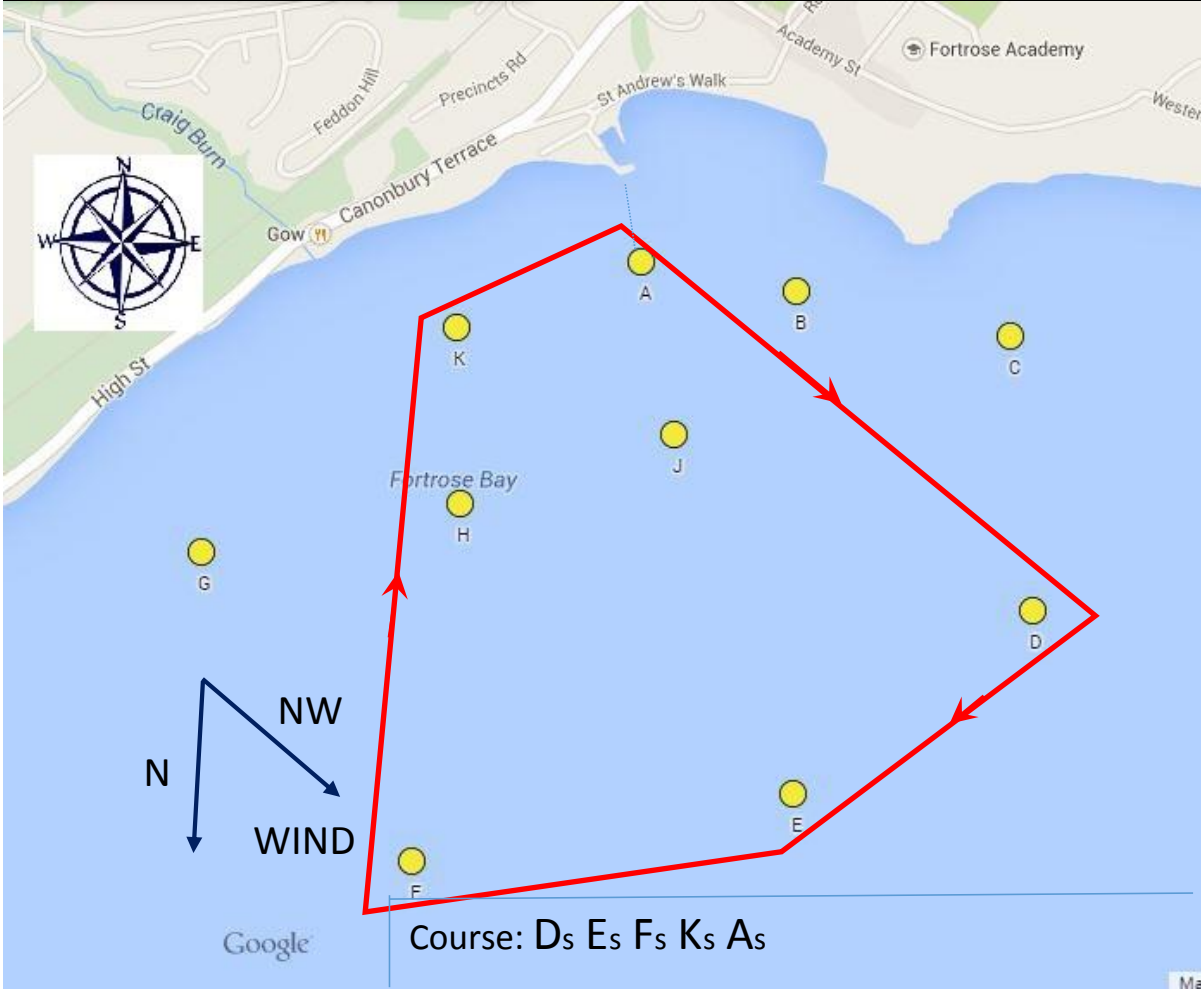
Course Plan 34

Wind Direction	N - NW
Conditions	
Start Line	Between Starters Box and Mark A
Finish Line	Between Starters Box and Mark A
Course	K _p E _p D _p A _p



Course Plan 35

Wind Direction	N - NW
Conditions	
Start Line	Between Starters Box and Mark A
Finish Line	Between Starters Box and Mark A
Course	D _s E _s F _s K _s A _s



Course Plan 36

Wind Direction	N - NW
Conditions	
Start Line	Between Starters Box and Mark A
Finish Line	Between Starters Box and Mark A
Course	K _p F _p E _p D _p A _p

