



BLACK ISLE CHALLENGE CUP 2024 (OPEN EVENT)

CSC Race Marks and NLB Navigation Buoys in Inner Moray Firth and Inverness Firth

APPENDIX 1 - COURSES

Please note: Not shown on the maps below is a large inflatable orange buoy which will be deployed prior to the start of the race. Fishing creels and marker buoys permitting the buoy will be laid south-west of the starting line towards Avoch in approximate position 57°34.29N 004°08.54W. This temporary inflatable buoy is identified as 'Orange Buoy' in the course details below.

Course 1 (East Wind)

Class 1 – Approximately 12.20 NM

Skate Inner (S); Orange Buoy (S); Skate Outer (S); Craigmee (S); Munlochy (S); Orange Buoy (S); Mark A (S); Skate Inner (S), Orange Buoy (S); Finish

Class 2 – Approximately 10.40 NM

Skate Inner (S); Craigmee (S); Munlochy (S); Orange Buoy (S); Mark A (S); Skate Inner (S); Skate Outer (S); Orange Buoy (S); Finish

Course 2 (West Wind)

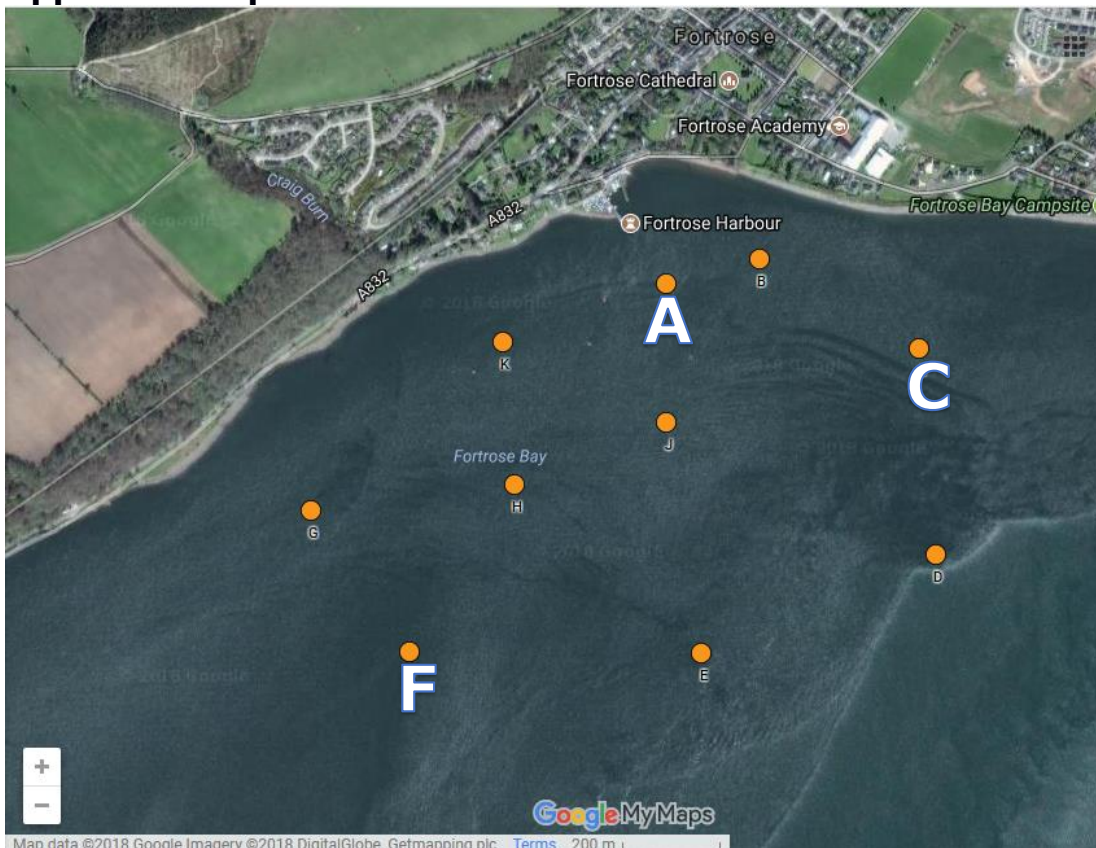
Class 1 – Approximately 12.40 NM

Orange Buoy (P); Skate Inner (S); Munlochy (P); Craigmee (P); Skate Outer (P); Orange Buoy (S); Mark A (S); Orange Buoy (P); Skate Inner (P); Finish

Class 2 – Approximately 10.50 NM

Orange Buoy (P); Munlochy (P); Craigmee (P); Skate Outer (P); Orange Buoy (S); Mark A (S); Skate Inner (P); Finish

Approximate position of CSC Race Marks

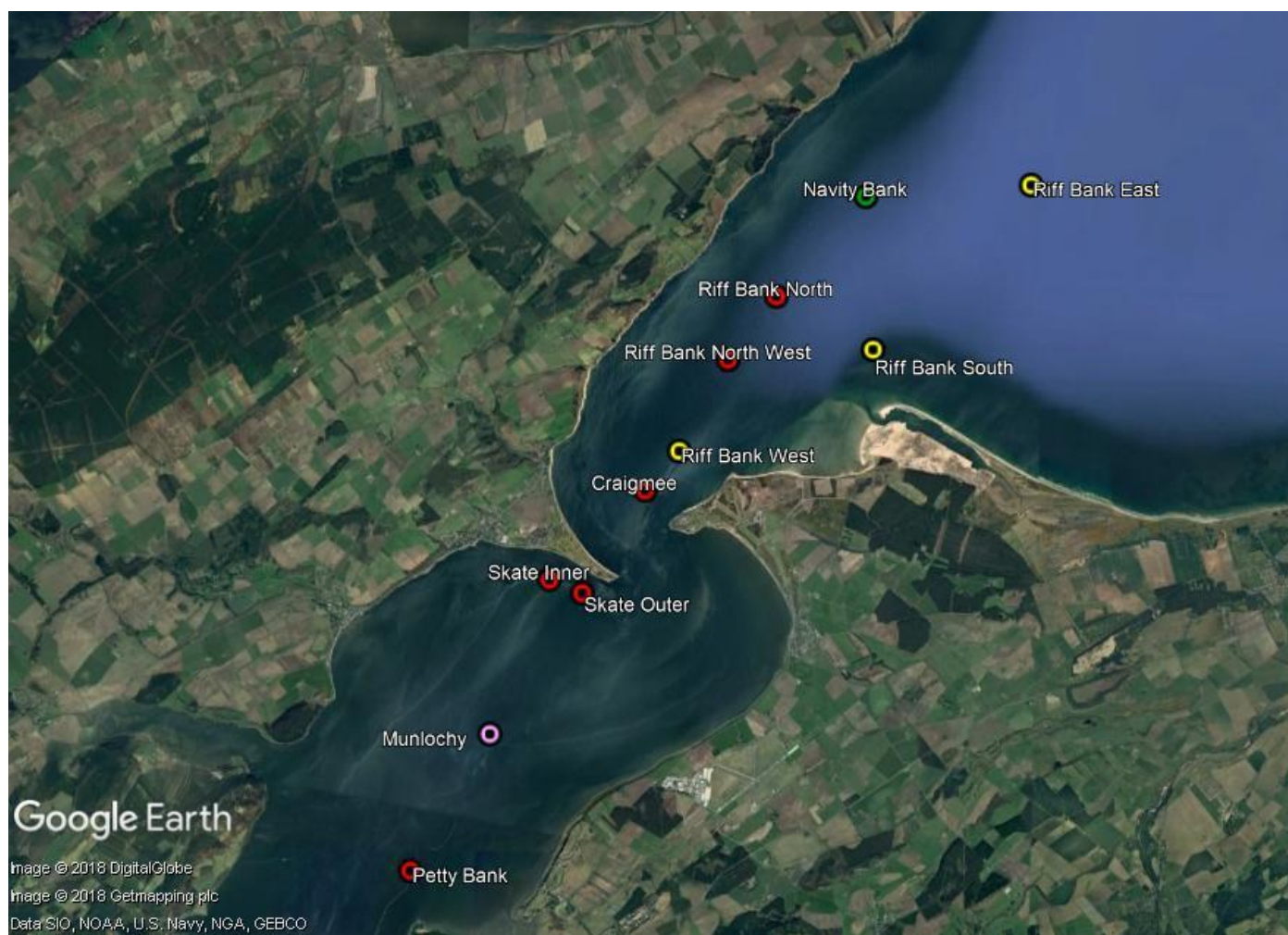


Disclaimer: this map is not to be used for navigation.

Approximate position of Northern Lighthouse Board Navigational buoys

Craigmee	57° 35.30' N	004° 05.01' W
Munlochy	57° 32.91' N	004° 07.65' W
Navity Bank	57° 38.22' N	004° 01.18' W
Petty Bank	57° 31.58' N	004° 08.98' W
Riff Bank East	57° 38.38' N	003° 58.18' W
Riff Bank North	57° 37.22' N	004° 02.75' W
Riff Bank North-west	57° 36.59' N	004° 03.59' W
Riff Bank South	57° 36.73' N	004° 00.97' W
Riff Bank West	57° 35.69' N	004° 04.42' W
Skate Inner	57° 34.41' N	004° 06.68' W
Skate Outer	57° 34.29' N	004° 06.08' W

Disclaimer: Reference should be made to the appropriate Admiralty Charts of the area as amended from time to time by Notices to Mariners, for the location and description of navigational buoys, channels and navigational hazards.



Disclaimer: this map is not to be used for navigation.