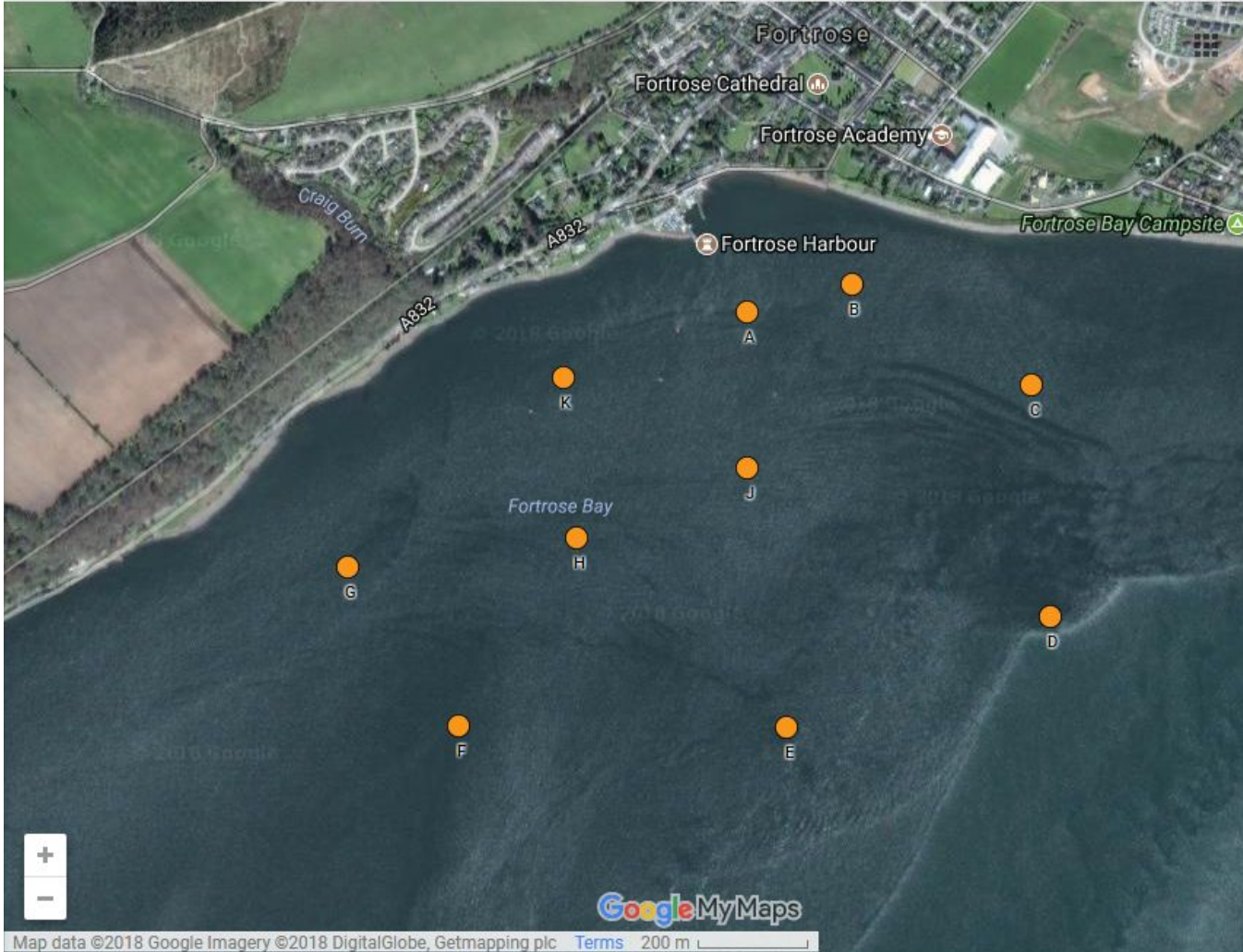


OPEN CRUISER REGATTA

CSC Race Marks and NLB Navigation Buoys in Inner Moray Firth and Inverness Firth

Approximate position of CSC Race Marks



Disclaimer: this map is not to be used for navigation.

Approximate position of Northern Lighthouse Board Navigational buoys

Riff Bank North	57° 37.22' N	004° 02.75' W
Riff Bank North-west	57° 36.59' N	004° 03.59' W
Riff Bank South	57° 36.73' N	004° 00.97' W
Riff Bank West	57° 35.69' N	004° 04.42' W
Craigmee	57° 35.30' N	004° 05.01' W
Skate Inner	57° 34.41' N	004° 06.68' W
Skate Outer	57° 34.29' N	004° 06.08' W
Munlochy	57° 32.91' N	004° 07.65' W
Petty Bank	57° 31.58' N	004° 08.98' W



Disclaimer: Reference should be made to the appropriate Admiralty Charts of the area as amended from time to time by Notices to Mariners, for the location and description of navigational buoys, channels and navigational hazards.



Disclaimer: this map is not to be used for navigation.